



PRODUCT CATALOG

24/7 Ordering



APEX CIPP
SOLUTIONS
APEXCIPP.COM

 **repi[®]per**

CONTENT

REPIPER RELINING CONNECTION	4
REPIPER STEP-COUPLING	5
REPIPER PJS TOOL	6
EQUIPMENT FOR THE REPIPER PJ'S TOOL	7
HOSE FOR FIXTURE HOLDER	7
ADAPTER	7
PULL PLUG	7
EQUIPMENT	8
EJECTOR	8
INVERSION TOOL	8
BIG STEAM	8
REPIPER LUBRICANT	9
REPIPER LUBRICANT	9
REPIPER LUBRICANT	9
PJS LINERS	10
RED-HOT FIXTURE	11
PJS FIXTURE	12
TRAINING	13

Repiper offers tools enabling renovation to damaged plumbing in buildings using 'Trenchless Rehabilitation'. Repiper's products facilitate relining installations- especially installations of pipe joint reinforcements, as well as plumbing of smaller dimensions eg. plumbing of apartment and bathrooms.

Through a profitable growth, Repiper's vision is to challenge and develop the relining industry as a leading niche player. Repiper will advocate for sustainable pipe renewals of the future, through innovative solutions and increased dissemination of knowledge.



REPIPER STEP-COUPLING



The STEP-Coupling is a secure solution to connect horizontal relined and unlined pipes. The disadvantage of traditional connectors is that there are seams created, increasing the risk of leakage. In addition it is difficult to achieve the desired results using traditional solutions. With Repipers STEP-Coupling watertight connections are created without seams or gaps.

Design protection; 007332374-0001

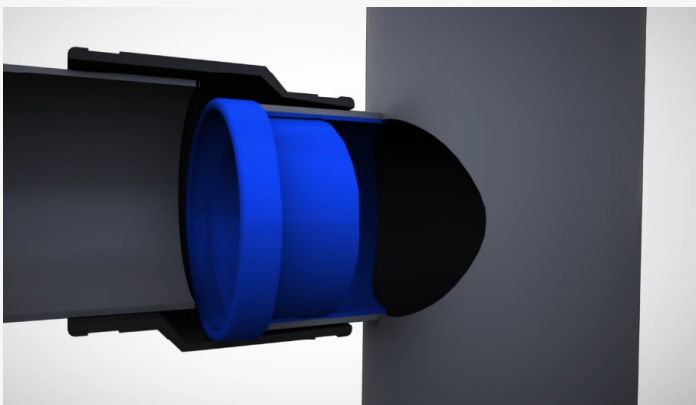


We provide Repiper Step-Coupling in the following dimensions;

Small: 75mm/ 3"

Large: 110mm/ 4.3"

“THE BEST SOLUTION TO CONNECT A NEW BATHROOM DRAIN TO A LINED HOST PIPE”



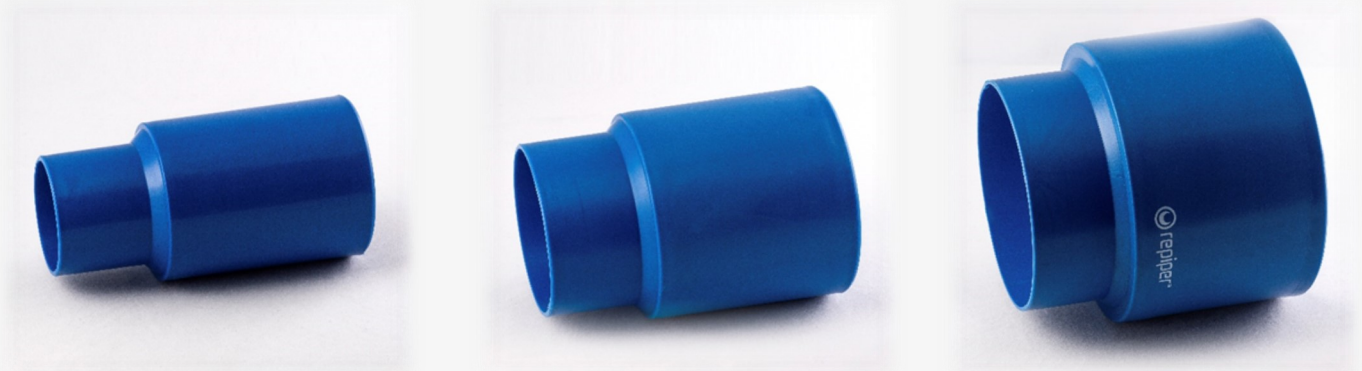
Visit www.repiper.com to watch the video about how the product works.

REPIPER RELINING CONNECTION

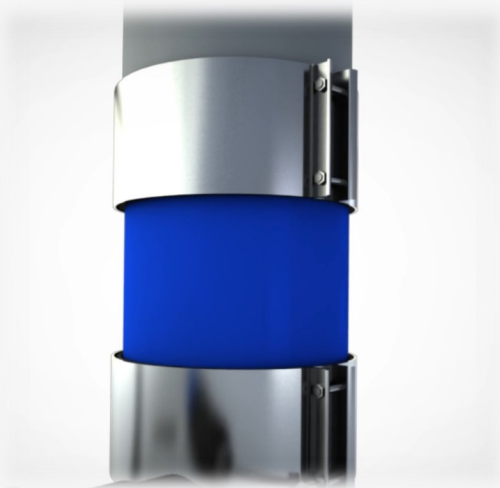
Repipe Relining Connection is a secure solution to connect vertical relined pipes and unlined pipes. Together with two jet connectors/ferncos and a tube of sealant, this tool creates a watertight transition between the pipes.

We provide Repiper Relining Connection in the following dimensions:

Small: 75mm/3"
Medium: 100mm/4"
Large: 160mm/6"



"DON'T LEAVE THE WORKSPACE WITH AN EXPOSED SEAM IN THE JOINT, USE THE REPIPER RELINING CONNECTION "



Repipe Relining Connection is the perfect tool to use when lining pipes in stages and cut the host pipe to avoid infiltration between liner and host pipe.

It's also the perfect tool to install on the ventings on the lined pipe as an indicator that the pipe is lined.

Visit www.repipe.com to watch the movie of how the product works.

REPIPER PJ'S- TOOL

Repiper Pipe Joint Systems' is patented and custom designed for installing pipe joint reinforcements, simplifying installations. The flexibility and bendiness of the tools enable lining installations of the entire plumbing system including pipes followed by a bend or angle. Many pipe joints that were previously inaccessible for installers are now accessible thanks to the design of our PJS-tools.

The Fixture holder is carefully made to easily go through bends but still have the stiffness for pushing- an option for pulling with pull plug. The patent includes the combination of the Fixture holder and the hose.

Patent no; US10436375B2, US9657883B2, EP2499414B1

We provide the Fixture Holder in the following sizes:

Small: 50-100mm / 2"-4"

Medium: 100-150mm / 4"-6"



“THE MAIN ADVANTAGE COMPARED TO OTHER TOOLS ON THE MARKET ARE THAT THE TOOLS IS DURABLE, USER-FRIENDLY, BENDABLE AND COMPATIBLE.”



DURABLE

The unique design, the materials and the functionality of the tools make them durable.



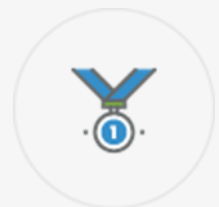
USER-FRIENDLY

Repiper PJS tools can be used for both vertical and horizontal relining.



BENDABLE

Repiper's PJS tools are flexible and bendable, which is unique to our patented tools.



COMPATIBLE

Our PJS Tools can be used with heat and steam, to ease installation and save time.

EQUIPMENT FOR REPIPER PJ'S TOOL



Hose for PJ's Fixture Holder

Unique hydraulic hose that works as your single feed to push, pull, rotate, aim, inflate and steam the PJS tool in place.



Adaptor

The adaptor can be connected from the PJ's system to the air unit and steam unit.

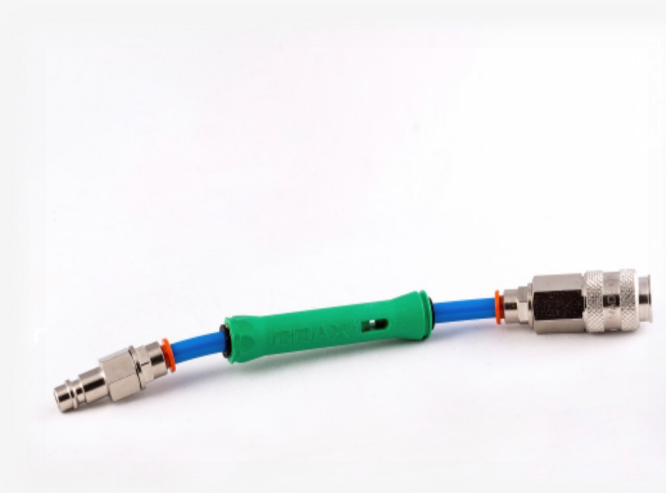


Pull Plug

The Pull plug with steam flow is useful in vertical installations to make sure the steam flows through the tool.

The Pull plug without steam flow is for lateral installations and/or when your source of air-pressure is limited.

EQUIPMENT



Ejector (vacuum)

Use your air-pressure to deflate the fixture and create a vacuum through the Repiper Ejector



Inversion tool

Use the inversion tool to easily mount the Liner on the Fixture



Big steam– steambox

Use the Repiper's Steambox to accelerate the curing process and safer installations. An absolute necessity for several successful installations a day. Advise with your resin manufacturer on compatibility with steam



Repiper lubricant blue 5kg

A biodegradable lubricant for branch reinforcement tools and liners. Contains no oil or toxic chemicals and is therefore an environmentally friendly alternative and an indispensable product to carry with you when installing branch reinforcements and liners.



Repiper lubricant blue 1kg

A biodegradable lubricant for branch reinforcement tools and liners. Contains no oil or toxic chemicals and is therefore an environmentally friendly alternative and an indispensable product to carry with you when installing branch reinforcements and liners.



Repiper lubricant 0,5kg

A biodegradable lubricant for branch reinforcement tools and liners. Contains no oil or toxic chemicals and is therefore an environmentally friendly alternative and an indispensable product to carry with you when installing branch reinforcements and liners.

PJ'S LINERS



PJ's Liner single joint

The PJ's Liner single joint is made to seal pipejoints- also known as T's.

Repiper offers the liner from 6 inch down to 2 inch and in 45*, 65* and 90* arms.



PJ's Liner Y-joint

The PJ's Liner Y-joint is made to seal pipejoints- also known as T's.

Repiper offers the liner from 6 inch down to 2 inch and in 90* arms.



PJ's Liner X-joint

The PJ's Liner X-joint is made to seal pipejoints- also known as T's.

Repiper offers the liner from 6 inch down to 2 inch and in 90* arms.

REDHOT- FIXTURE

Red Hot Fixture single joint



The single joint fixture is made out of an extremely durable and flexible material, handmade to position and inflate the t-liner perfectly in place. Complement with Hose for PJS Fixture,

Repiper offers the RedHot fixture from 6" down to 2" and in 90* arms.

Red Hot Fixture Y-joint



The Y-joint fixture is made out of an extremely durable and flexible material, handmade to position and inflate the t-liner perfectly in place. Complement with Hose for PJS Fixture,

Repiper offers the RedHot fixture from 6" down to 2" and in 90* arms.

Red Hot fixture X-joint



The X-joint fixture is made out of an extremely durable and flexible material, handmade to position and inflate the t-liner perfectly in place. Complement with Hose for PJS Fixture,

Repiper offers the RedHot fixture in 3"-4" and in 90* arms

PJ'S FIXTURES



PJ's Fixture single joint

An easy-to-use silicone-based single-branch fixture. Fits on PJS Fixture Holder.

Repper offers the PJ's fixture from 6" down to 2" and in 45 and 90* arms.

Complement with Hose for PJS Fixture, Inversion tool for PJS Fixture and Adaptor



PJ's Fixture Y-joint

An easy-to-use silicone-based Y-joint fixture. Fits on PJS Fixture Holder.

Repper offers the PJ's fixture from 6" down to 2" and in 90* arms.

Complement with Hose for PJS Fixture, Inversion tool for PJS Fixture and Adaptor



PJ's Fixture X-joint

An easy-to-use silicone-based X-joint fixture. Fits on PJS Fixture Holder.

Repper offers the PJ's fixture from 6" down to 2" and in 90* arms.


Complement with Hose for PJS Fixture, Inversion tool for PJS Fixture and Adaptor

TRAINING

Repiper offer contractors detailed on-site training from our experienced staff as well as project planning and education. We have deep knowledge not only about our products, but also how to use our system on the field to execute real work while training your team to achieve success.

Training in your shop is important to cover a lot of ground, but we know the difference between demoing and working.

As a Repiper Distributor/ Contractor you will be a part of a world wide community where we exchange knowledge and lessons. You will also get access to educational "how to" videos and material on our website available for you at any time.

A photograph showing a worker in a trench, wearing a black cap, glasses, and blue gloves, operating a large pipe relining tool. The worker is kneeling on the left side of the trench, which is lined with concrete. The tool is a long, cylindrical pipe with a cutting head at the end, being pushed into the trench. The background shows a concrete wall and a wooden panel. To the right, there is a red fire extinguisher and a white container.

“We know the difference between training in the shop and training on the field, that’s why we offer both”



CONTACT

24/7 Online Ordering



855.997.0524

Repiper US Inc.
Quechee, Vermont

Phone: +1 802-230-5703
Email: info.us@repiper.com
www.repiper.com