

PICOTE

LIFE FOR PIPES

PRODUCT CATALOG

JANUARY - JUNE 2024



Apex CIPP is your Picote dealer
& certified service center!

941-300-0441

info@apexcipp.com

www.apexcipp.com

PICOTEGROUP.COM | PICOTEINSTITUTE.COM



ALSO INSIDE:

FEATURE	FEATURE	FEATURE
2023 TRENCHLESS INDUSTRY OUTLOOK	PIT LAUNCH HOW FOR PROJECTS IN TIGHT AREAS	TRENCHLESS PIONEER – MICHAEL BYRNE

Working with you every step of the way! Picote is not only a global award-winning manufacturer, but also a trenchless rehabilitation contractor, CIPP and Coating expert and an innovator with more than 150 global patents. The company provides world-class products and support services to customers around the world.

Picote Institute encompasses state-of-the-art training centres located in Finland, UK and the United States as well as a cloud-based Learning Management System – Picote Institute Online - at www.picoteinstitute.com.

The global training centers offer in-depth practical training and work closely with Picote's Authorized Resellers and Service Centers. Technical teams provide support via phone, virtually and in-person on-site support and technical consulting around the world from planning to site execution.

The Institute Online offers 24/7 assistance e-learning courses, manuals, fact sheets, guides, technical documentation, and support videos.

Need some help? Our highly experienced team can provide needed support wherever necessary.

Miller Range	4
Starter Kits Cutting Kits Cleaning Kits	10
Cleaning Chains	12
Speciality Cleaning Chains	16
Special Cleaning Tools	18
Twisters	20
Picote Brush Coating™	22
CIPP Lining Tools	26
Connection Collar System	30
Pro Packers	36
Special Drill Heads & Tiger Bores	38
Smart Cutter™	40
Front Panels Drill Heads	42
Grabbers	44
Pipe Cutter	45
Picote Flexible Shaft	46
Leaders, Connectors & Additional Tools	47
Miller Spare Parts	48
Maxi Power+ Tools	50
Robot Tools for Schwalm Robots	54



Mini Cleaner

- 1/3" shaft
- Cleaning 1¼-3"
- Cutting 1¼-3"
- Brush Coating 1¼-3"
- Max Range: 50 ft (no ext)
- Weight: 59 lbs
- Speed: 500-2900rpm

Designed with plumbers in mind. Cleaning, descaling, roots, cutting & coating in small pipes is now easier than ever before. It features a highly flexible shaft allowing work in smaller diameter pipes, even those with multiple 90° bends and P-traps as small as 2". It is fed by a standard wall outlet making it a very easy to use on almost any job site.

Standard safety features: protective outer shaft casing, operator presence foot control, mechanical safety clutch & E-stop.

Product #

Model

3540000816US

110v



Mini Cleaner +C

- 1/3" shaft
- Cleaning 1¼-3"
- Cutting 1¼-3"
- Brush Coating 1¼-3"
- Max Range: 50 ft (no ext)
- Weight: 59 lbs
- Speed: 500-2900rpm

Mini Cleaner +C features an integrated 98 ft color camera that makes viewing of cleaning and cutting jobs easier and helps to make Picote Brush Coating™ setup even simpler. Features a smaller color camera head that allows it to follow the Mini Cleaner through 2" P-traps & bends.

Camera Specs: Head Diameter 7/8", 98ft cable, 512hz integrated sonde. 7" color monitor. Lighting: 8 LEDs with brightness control Digital footage counter. Stainless steel camera head (IP68).

Product #

Model

3540001818US

110v

MINI CLEANER SERIES



Super Mini Cleaner (Battery Powered)

- 1/3" shaft
- Cleaning 1¼-3"
- Cutting 1¼-3"
- Brush Coating 1¼-3"
- Max Range: 50 ft (no ext)
- Weight: 73 lbs
- Speed: 550-2200rpm

The Super Mini Cleaner runs off long-lasting batteries - but it is much more than just a battery-powered version of its predecessor, it is a complete reimagining of what smaller diameter pipe cleaning and rehabilitation equipment can be with new features like an electronic clutch, stepless speed control, and a dedicated motor which makes it more mobile, more powerful, more efficient, and eco-friendly. It makes quick work of cleaning, descaling, root removal, cutting, reinstatements & Picote Brush Coating™ in 1¼-3" pipes. Easy to transport and operate regardless of power outlet locations or availability! Includes Standard Battery for up to 3 hours of continuous work. Can run while plugged into a wall outlet. High Output Battery (9540004035) upgrade option for up to 4 hours of continuous work (sold separately). It's not just about doing the same things without a cord; it's about doing things you never thought were possible.

Product #	Model
3540002816US	120V



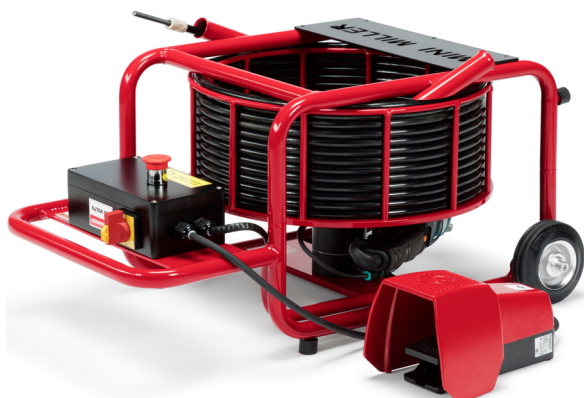
Super Mini Cleaner+C (Battery Powered)

- 1/3" shaft
- Cleaning 1¼-3"
- Cutting 1¼-3"
- Brush Coating 1¼-3"
- Max Range: 50 ft (no ext)
- Weight: 84 lbs
- Speed: 550-2200rpm

Designed with plumbers in mind. Same great features as the Super Mini Cleaner (Battery Powered) but also features an integrated 98 ft. color camera that makes viewing of cleaning and cutting jobs easier and helps to make Picote Brush Coating™ setup even simpler. Features a smaller color camera head that allows it to follow the Mini Cleaner through 2" P-traps & bends.

Camera Specs: Head Diameter 7/8", 98ft cable, 512hz integrated sonde. 7" color monitor. Lighting: 8 LEDs with brightness control Digital footage counter. Stainless steel camera head (IP68).

Product #	Model
3540003816US	120V



Mini Miller

- 1/3" shaft
- Cleaning 2-4"
- Cutting 2-3"
- Brush Coating 2-6"
- Max Range: 50 ft + 32 ft ext
- Weight: 59 lbs
- Speed: 500-2900rpm

The Mini Miller is a high speed, high torque unit designed for cleaning, descaling, and removing roots in pipes between 2-4" pipes and for cutting/reinstatements in 2-3" pipes. When paired with the Picote Mini Coating Pump or Xpress Coating System it is capable of Picote Brush Coating™ in 2-6" pipes as well. Weighing only 59 lbs, it's 1/3" shaft has a reach of 50 ft, which can be extended 32 ft by adding a shaft extension. It is fed by a standard 3 prong wall outlet making it a very easy to use on almost any job site.

Standard safety features: mechanical safety clutch, operator presence foot control, protective outer shaft casing & E-stop.

Product #	Model
3540000817US	110v



Mini Miller +C

- 1/3" shaft
- Cleaning 2-4"
- Cutting 2-3"
- Brush Coating 2-6"
- Max Range: 50 ft + 32 ft ext
- Weight: 59 lbs
- Speed: 500-2900rpm

Mini Miller +C features an integrated 98' color camera that makes viewing of cleaning and cutting jobs easier and helps to make Picote Brush Coating™ setup even simpler. Includes two 7/8" color camera heads with 512hz integrated sondes (one self-levelling and one standard). Non self-levelling camera head designed for use during Picote Brush Coating™.

Camera Specs (Self-levelling & Non Self-Leveling): Head Diameter 7/8", 98ft cable. 7" color monitor. Lighting: 12 LEDs with brightness control. Digital footage counter. Stainless steel camera head (IP68).

Product #	Model
3540001817US	110v

MINI MILLER SERIES



Super Mini Miller (Battery Powered)

- 1/3" shaft
- Cleaning 2-4"
- Cutting 2-3"
- Brush Coating 2-6"
- Max Range: 50 ft + 32 ft ext
- Weight: 73 lbs
- Speed: 550-2200rpm

The Super Mini Miller runs off long-lasting batteries - but it is much more than just a battery-powered version of its predecessor, it is a complete reimagining of what smaller diameter pipe cleaning and rehabilitation equipment can be with new features like an electronic clutch, stepless speed control, and a dedicated motor which makes it more mobile, more powerful, more efficient, and eco-friendly. It makes quick work of cleaning, descaling, root removal, cutting, reinstatements & Brush Coating. Easy to transport and operate regardless of power outlet locations or availability! Includes Standard Battery for up to 3 hours of continuous work. Can run while plugged into a wall outlet. High Output Battery (9540004035) upgrade option for up to 4 hours of continuous work (sold separately). It's not just about doing the same things without a cord; it's about doing things you never thought were possible.

Product #	Model
3540002817US	120V



Super Mini Miller+C (Battery Powered)

- 1/3" shaft
- Cleaning 2-4"
- Cutting 2-3"
- Brush Coating 2-6"
- Max Range: 50 ft + 32 ft ext
- Weight: 84 lbs
- Speed: 550-2200rpm

Designed with plumbers in mind. Same great features as the Super Mini Miller (Battery Powered) but also features an integrated 98 ft color camera that makes viewing of cleaning and cutting jobs easier and helps to make Picote Brush Coating™ setup even simpler. Includes two 7/8" color camera heads with 512hz integrated sondes (one self-levelling and one standard). Non self-levelling camera head designed for use during Picote Brush Coating™.

Camera Specs (Self-levelling & Non Self-Levelling): Head Diameter 7/8", 98ft cable. 7" color monitor. Lighting: 12 LEDs with brightness control. Digital footage counter. Stainless steel camera head (IP68).

Product #	Model
3540003817US	120V



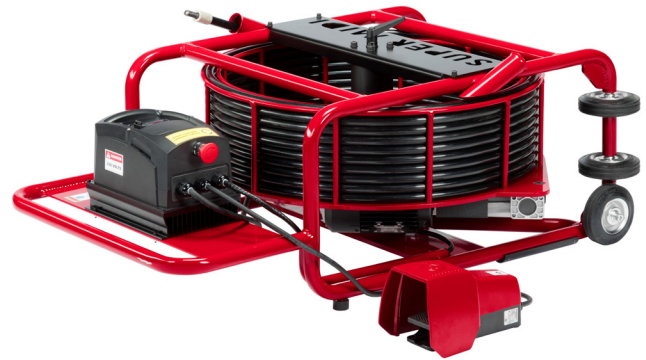
Midi Cleaner

- 3/8" shaft
- Cleaning 2-6"
- Cutting 2-4"
- Brush Coating 2-8"
- Max Range: 75 ft + 32 ft ext
- Weight: 143 lbs
- Speed: 500-1500rpm

Designed for cleaning, descaling and removing roots in 2-6" pipes and for cutting/reinstatements in 2-4" pipes. Add the Picote Maxi Coating Pump Or Xpress Coating System to coat 2-8" pipes as well. Offers the strength and flexibility of 3/8" shaft. Use even in 2" pipes with multiple 90° bends! Plugs into standard wall outlet, making it easy to use on almost any job site.

Standard safety features: protective outer shaft casing, operator presence foot control, electric safety clutch, and an E-stop.

Product #	Model
3551031000US	120v



Super Midi Miller

- 1/2" shaft
- Cleaning 3-6"
- Cutting 3-6"
- Brush Coating 3-8"
- Max Range: 65 ft + 32 ft ext
- Weight: 150 lbs
- Speed: 500-1500rpm

The Super Midi Miller is designed for cleaning, descaling, root removal, and cutting/reinstatements in 3-6" pipes. It has a range of 65 ft that can be increased by an additional 32 ft with a shaft extension. It can also be paired with the Picote Maxi Coating Pump or Xpress Coating System to coat pipes 3-8". Offers the added strength of the larger 1/2" shaft paired with a thinner shaft casing for flexibility. It is fed by a standard wall outlet making it very easy to use on almost any job site.

Standard safety features: protective outer shaft casing, operator presence foot control, electronic safety clutch, and an E-stop.

Product #	Model
3551031220US	120v



New 240v model now with 33% more power!

Maxi Miller

- 1/2" shaft
- Cleaning 3-10"
- Cutting 3-8"
- Brush Coating 3-12"
- Max Range: 100 ft + 32 ft ext
- Weight: 196 lbs
- Speed: 500-1475rpm

The Maxi and Maxi Plus Millers are high-speed, high torque powerhouses designed for tough challenges like heavy cleaning, removing concrete or failed CIPP liners, lateral reinstatements, and Picote Brush Coating™. Featuring a 1/2" Flexible Shaft, they have a range of 100 ft that can be extended 32 ft with a shaft extension. They can also be used for Picote Brush Coating™ by pairing it with the Maxi Coating Pump or Xpress Coating System. Maxi Plus features a detachable control box.

Standard safety features: protective outer shaft casing, operator presence foot control, electronic safety clutch, and an E-stop.

Product #	Model
3560032012US	Maxi Miller 110v
3560032112US	Maxi Miller 240v
3560042012US	Maxi Miller Plus 110v



Maxi Miller Power+

- 3/4" shaft
- Cleaning 4-12"
- Cutting 3-12" (3-4" straight pipe only)
- Concrete Removal 6-9"
- Max Range: 60 ft + (2) x 36 ft ext
- Weight: 284 lbs
- Speed: 500-1500rpm

The Maxi Power+ is our most powerful Miller for the toughest jobs. Perfect for heavy tuberculation and problem roots. Remove concrete or failed CIPP liners with a range of heavy-duty, specialized tools. Unique power requirements mean the units needs to be ran off a 3-phase 400V generator. For heavy-duty work in larger pipes.

Standard safety features: protective outer shaft casing, operator presence foot control, electronic safety clutch, and an E-stop.

Product #	Model
3570032018US	400v



Full Kit Contents Available on the Picote Institute

Scan the QR code below to visit the Picote Institute page where the full contents of each Picote Kit are available.

With our Picote Kits you can have all of the most commonly used tools to tackle almost any situation. Purchase the kit for the diameter that you work with the most.



Picote Starter Kits



Starter Kit for drain cleaning and descaling. Depending on pipe size, kits can include: Smart Sweeper, Tiger Drill Chain, Smart Cutter™ and Side Grinding Panels, Cyclone Premium Chain, Original Premium Chain, Original PVC Chain & Combo Hex Key. Full contents of each kit available on the Picote Institute.

Product #	Pipe Size	Shaft Size
1011000050	2"	1/3"
1011000075US	3"	1/3"
1011008100	4"	1/3"
1011010050	2"	3/8"
1011010075US	3"	3/8"
1011010100	4"	3/8"
1011010150	6"	3/8"
1011012075US	3"	1/2"
1011012100	4"	1/2"
1011012150	6"	1/2"
1011012200	8"	1/2"

Picote Pro Cutting Kits



A customized kit with most commonly used cutting/reinstatement tools. Depending on pipe size, kits can include: Special Drill Head(s), Twister Express and spare Front Drill Head or Original Twister with a Tiger Front Plate and Tiger Drill Head, and Smart Cutter™ with Side Grinding Panels. Also includes Sleeves and Leaders. Full contents of each kit available on the Picote Institute.

Product #	Pipe Size	Shaft Size
1030008050	2"	1/3"
1030008070	3"	1/3"
1030010070	3"	3/8"
1030010100	4"	3/8"
1030010150	6"	3/8"
1030012070	3"	1/2"
1030012100	4"	1/2"
1030012150	6"	1/2"
1030012200	8"	1/2"

STARTER, CUTTING & CLEANING KITS



Picote Pro Cleaning Kits

A customized kit with most commonly used cleaning tools. Depending on pipe size, kits can include: Special Drill Head, different types of Original and Cyclone Chains and Brushes, Smart Spider with spare legs, Smart Cutter™ with Side Grinding Panels. Also includes Sleeves and Leaders. Full contents of each kit available on the Picote Institute

Product #	Pipe Size	Shaft Size
1020008050	2"	1/3"
1020008075US	3"	1/3"
1020008100	4"	1/3"
1020010075US	3"	3/8"
1020010100	4"	3/8"
1020010150	6"	3/8"
1020010200	8"	3/8"
1020012075US	3"	1/2"
1020012100	4"	1/2"
1020012150	6"	1/2"
1020012200	8"	1/2"



Tool Bags & Mini Cleaner Kits

Tools Bags available to build your own custom Picote Tool Kit.

Cleaning & Cutting Kits for the Mini Cleaner. Includes the most common items for working in 1¼-2" pipes. Full contents of each kit available on the Picote Institute.

Product #	Product
9350000203	Tool Bag Extra Small (11"x5.1"x3.9")
9350000204	Tool Bag Small (15"x8.3"x5.1")
9350000201	Tool Bag - Medium (24.8"x7.9"x7.1")
9350000202	Tool Bag - Large (24.8"x12.6"x11.8")
3540000816TK	Mini Cleaner Tool Kit - 1/3" Shaft
3540000818CL	Mini Cleaner Cleaning Kit - 1/3" Shaft
3540000818CU	Mini Cleaner Cutting Kit - 1/3" Shaft



Single Chain Model



Cleaning Chain

PVC Original Chain

No carbides. General cleaning chain to restore flow quickly and safely or to remove light roots in fragile pipes such as plastic, copper and clay. Single Chain and Cleaning Chain models available for a more gentle option.

Product #	Pipe Size	Shaft Size
1381084032	Cleaning Chain 1.25"	1/3"
1381084040	Cleaning Chain 1.5"	1/3"
1381010550	Cleaning Chain 2"	3/8"
1381010570	Cleaning Chain 3"	3/8"
1380084051P	2" (Single)	1/3"
1380084101P	4" (Single)	1/3"
1380084050P	2"	1/3"
1380084070P	3"	1/3"
1380084100P	4"	1/3"
1380084150P	5-6"	1/3"
1380105070P	3"	3/8"
1380105100P	4"	3/8"
1380105150P	5-6"	3/8"
1380125070P	3"	1/2"
1380125100P	4"	1/2"
1380125150P	6"	1/2"
1380125200P	8"	1/2"



PVC Cyclone Chain

No carbides. General cleaning chain for descaling and removing light roots in fragile pipes such as plastic, copper and clay. Centrifugal force centers the tool inside the pipe, providing greater protection for damaged or fragile pipes.

Product #	Pipe Size	Shaft Size
1381084075P	3"	1/3"
1381084100P	4"	1/3"
1381084125P	5"	1/3"
1381105070P	3"	3/8"
1381105100P	4"	3/8"
1381105125P	5"	3/8"
1381105150P	6"	3/8"
1381125075P	3"	1/2"
1381125100P	4"	1/2"
1381125125P	5"	1/2"
1381125150P	6"	1/2"
1381125200P	8"	1/2"

PVC & STANDARD CHAINS



Double Chain Model

Standard Original Chain

Star carbide (3-ridge). An efficient general cleaning chain. Suitable for clay, concrete and cast iron pipes. Single and Double Chain models for a more gentle option.

Product #	Pipe Size	Shaft Size
1380065032	1 1/4"	1/4"
1380084051	2" (Single)	1/3"
1380084101	4" (Single)	1/3"
1380084050	2" (Double)	1/3"
1380184050	2"	1/3"
1380184070	3" (Double)	1/3"
1380084070	3"	1/3"
1380084100	4"	1/3"
1380084150	5-6"	1/3"
1380105051	2" (Single)	3/8"
1380105050	3" (Double)	3/8"
1380105071	3" (Double)	3/8"
1380105070	3"	3/8"
1380105100	4"	3/8"
1380105150	5-6"	3/8"
1380105200	8"	3/8"
1380125071	3" (Double)	1/2"
1380125070	3"	1/2"
1380125100	4"	1/2"
1380125150	5-6"	1/2"
1380125200	8"	1/2"
1380125225	9-10"	1/2"



Standard Cyclone Chain

Star carbide (3-ridge). Centrifugal force centers the tool inside the pipe, providing greater protection for damaged or fragile pipes. Suitable for clay, concrete and cast iron pipes.

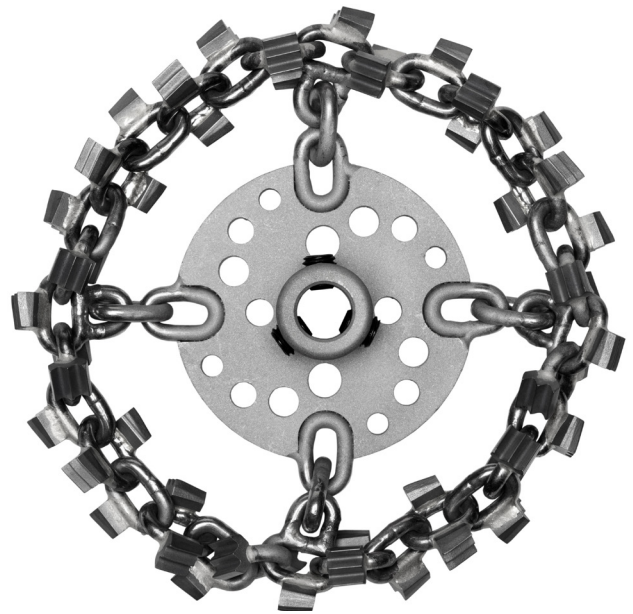
Product #	Pipe Size	Shaft Size
1381084075	3"	1/3"
1381084100	4"	1/3"
1381084125	5"	1/3"
1381084150	6"	1/3"
1381105070	3"	3/8"
1381105100	4"	3/8"
1381105125	5"	3/8"
1381105150	6"	3/8"
1381125075	3"	1/2"
1381125100	4"	1/2"
1381125125	5"	1/2"
1381125150	6"	1/2"
1381125200	8"	1/2"
1381125225	9"	1/2"
1381125250	10"	1/2"



Tiger Original Chain

Extra-hard, very long-lasting carbide teeth with a lighter chain material create a gentle, lightweight, but extremely durable option for cleaning clay, concrete, and cast iron pipes including roots, scale, and blockages.

Product #	Pipe Size	Shaft Size
1380084050V	2"	1/3"
1380084070V	3"	1/3"
1380084100V	4"	1/3"
1380084150V	6"	1/3"
1380105070V	3"	3/8"
1380105100V	4"	3/8"
1380105150V	5-6"	3/8"
1380105200V	8"	3/8"
1380125070V	3"	1/2"
1380125100V	4"	1/2"
1380125150V	5-6"	1/2"
1380125200V	8"	1/2"
1380125250V	9-10"	1/2"



Tiger Cyclone Chain

Extra-hard, very long-lasting carbide teeth and a lighter chain material create a gentle, lightweight, but extremely durable option for cleaning clay, concrete, and cast iron pipes. Centrifugal force centers the tool inside the pipe, providing greater protection for damaged or fragile pipes.

Product #	Pipe Size	Shaft Size
1381084075V	3"	1/3"
1381084100V	4"	1/3"
1381084150V	6"	1/3"
1381105075V	3"	3/8"
1381105100V	4"	3/8"
1381105150V	6"	3/8"
1381105200V	8"	3/8"
1381125075V	3"	1/2"
1381125100V	4"	1/2"
1381125150V	6"	1/2"
1381125200V	8"	1/2"
1381125250V	10"	1/2"

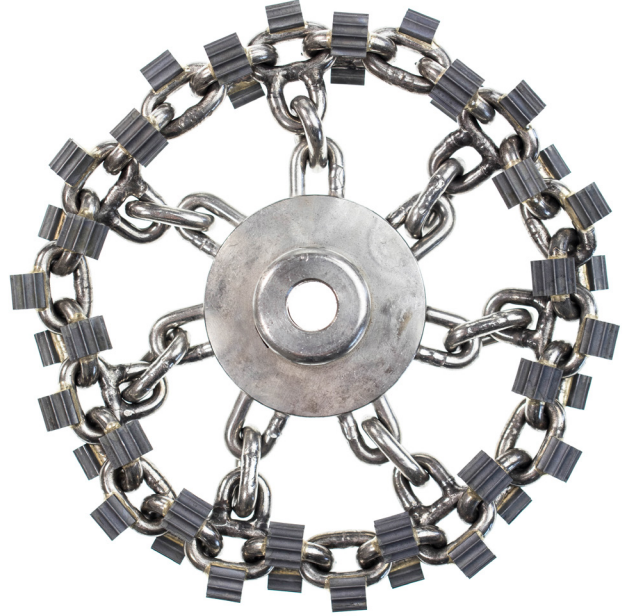
TIGER & PREMIUM CHAINS



Premium Original Chain

Larger and heavier U carbide (7-ridge) makes it stronger and faster than any other chain on the market. A versatile tool for clay, concrete, and cast iron pipes. For tough descaling, hard deposits and removing residual concrete or failed liner, including inconsistencies, wrinkles and remains.

Product #	Pipe Size	Shaft Size
1380084050U	2" (Double)	1/3"
1380184050U	2"	1/3"
1380084070U	3"	1/3"
1380084100U	4"	1/3"
1380084150U	5-6"	1/3"
1380105070U	3"	3/8"
1380105100U	4"	3/8"
1380105150U	5-6"	3/8"
1380125070U	3"	1/2"
1380125100U	4"	1/2"
1380125150U	5-6"	1/2"
1380125200U	8"	1/2"
1380125225U	9-10"	1/2"



Premium Cyclone Chain

Larger and heavier U carbide (7-ridge) makes it stronger and faster than any other chain in the market. Centrifugal force centers the tool inside the pipe, providing greater protection for damaged or fragile pipes. For tough descaling, hard deposits and removing residual concrete or failed liner.

Product #	Pipe Size	Shaft Size
1381084075U	3"	1/3"
1381084100U	4"	1/3"
1381084125U	5"	1/3"
1381105075U	3"	3/8"
1381105100U	4"	3/8"
1381105150U	6"	3/8"
1381125075U	3"	1/2"
1381125100U	4"	1/2"
1381125125U	5"	1/2"
1381125150U	6"	1/2"
1381125200U	8"	1/2"
1381125225U	9"	1/2"
1381125250U	10"	1/2"



Tiger Drill Chain

Tiger Original Chain with an integrated Tiger front drill head featuring long-lasting carbides to efficiently cut through roots, scale, blockages and lightly collapsed liners.

Product #	Pipe Size	Shaft Size
1380084070VP	3"	1/3"
1380084100VP	4"	1/3"
1380105070VP	3"	3/8"
1380105100VP	4"	3/8"
1380105150VP	5-6"	3/8"
1380105200VP	8"	3/8"
1380125070VP	3"	1/2"
1380125100VP	4"	1/2"
1380125150VP	5-6"	1/2"
1380125200VP	8"	1/2"
1380125250VP	9-10"	1/2"



Tiger Drill Chain PVC

Tiger Original PVC Chain with an integrated Tiger front drill head featuring long lasting carbides to efficiently and safely cut through roots, scale and blockages in PVC and fragile pipes. An essential "first fix" tool!

Product #	Pipe Size	Shaft Size
1382084070P	3"	1/3"
1382084100P	4"	1/3"
1382105070P	3"	3/8"
1382105100P	4"	3/8"
1382105150P	5-6"	3/8"
1382125070P	3"	1/2"
1382125100P	4"	1/2"
1382125150P	5-6"	1/2"



NEW!

Express Drill Chain with Standard Carbides

A convenient and fast tool to be used in pipes that are not too fragile to unblock, remove roots or grind open connections before installing a connection collar. Available for 3/8" and 1/2" Shaft.

Product #	Pipe Size	Shaft Size
1380105070-DC	3"	3/8"
1380105100-DC	4"	3/8"
1380105150-DC	6"	3/8"
1380125100-DC	4"	1/2"
1380125150-DC	6"	1/2"

Express Drill Chain Spare Chains

Product #	Spare Part	Pipe Size	Shaft Size
1380105070-SDC	Chain	3"	3/8"
1380105100-SDC	Chain	4"	3/8"
1380105150-SDC	Chain	6"	3/8"
1380125100-SDC	Chain	4"	1/2"
1380105150-SDC	Chain	6"	1/2"

Express Drill Chain Spare Front Drill Head

Product #	Spare Part
1300214048	Front Drill Head 1.9"
1300214058	Front Drill Head 2.3"

SPECIALITY CLEANING CHAINS



3D Premium Chain with Leader

Save time and money at the work site. By controlling the speed, the 3D Chain continues to expand as it removes material until it reaches its maximum size. Also for cleaning in pipes with diameter transitions. Unique 'U carbide' (7-ridge). Includes special Leader.

Product #	Pipe Size	Shaft Size
1382005070	2-3"	1/3"
1382070100	3-4"	1/3"
1384005070	2-3"	3/8"
1384070100	3-4"	3/8"
1384100150	4-6"	3/8"
1383070100	3-4"	1/2"
1383100150	4-6"	1/2"

3D Premium Chain Spare Parts

Product #	Spare Part	Pipe Size	Shaft Size
1380084050D	Chain	2-3"	1/3"
1380084070D	Chain	3-4"	1/3"
1380125070D	Chain	3-4"	1/2"
1380125100D	Chain	4-6"	1/2"
9380000054	Spring	2-3"	1/3"
9380000055	Spring	3-4"	1/3"
9380000056	Spring	3-4"	1/2"
9380000057	Spring	4-6"	1/2"
1382005071	Leader	2-3"	1/3"
1382070101	Leader	3-4"	1/3"
1383070101	Leader	3-4"	1/2"
1383100151	Leader	4-6"	1/2"



3D PVC Chain with Leader

Save time and money at the work site. By controlling the speed, the 3D Chain continues to expand as it removes material until it reaches its maximum size. Also for cleaning in pipes with diameter transitions. No carbides. For plastic or fragile pipes. Includes special Leader.

Product #	Pipe Size	Shaft Size
1382005070P	2-3"	1/3"
1382070100P	3-4"	1/3"
1384005070P	2-3"	3/8"
1384070100P	3-4"	3/8"
1383070100P	3-4"	1/2"

3D PVC Chain Spare Parts

Product #	Spare Part	Pipe Size	Shaft Size
1380084050DP	Chain	2-3"	1/3"
1380084070DP	Chain	3-4"	1/3"
1380125070DP	Chain	3-4"	1/2"
9380000058	Spring	2-3"	1/3"
9380000059	Spring	3-4"	1/3"
9380000070	Spring	3-4"	1/2"
1382005071P	Leader	2-3"	1/3"
1382070101P	Leader	3-4"	1/3"
1383070101P	Leader	3-4"	1/2"

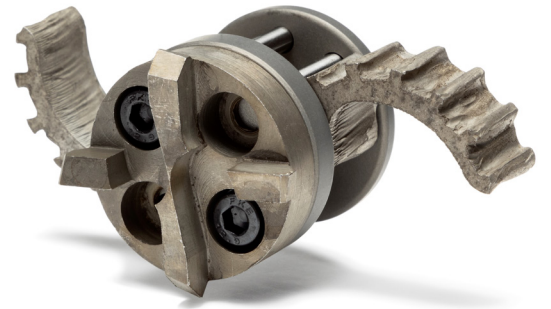


Smart Spider

For descaling damaged pipes with missing bottoms or holes where typical chains or other descaling methods may be too aggressive, get stuck in the missing sections or holes, or can come out from the pipe. Also good for Fats, Oils & Grease (FOGs).

Product #	Pipe Size	Shaft Size
1390105102	4"	3/8"
1390105152	6"	3/8"
1390125102	4"	1/2"
1390125152	6"	1/2"

Product #	Part
1390100001	Smart Spider 4" Legs
1390100002	Smart Spider 6" Legs
1390100005	Smart Spider Rubber Flex
1390100004	Smart Spider Axle



Mini Smart Sweeper

When in doubt, get the Sweeper out! Versatile tool for tough cleaning scenarios including tuberculation, roots, calcite, & mineral/uranic scale in cast iron, concrete, clay, & PVC pipes. 4" models include Spring Leader.

Product #	Pipe Size	Shaft Size
1360080050	1.5-2"	1/3"
1360080075	3"	1/3"
1360100050	2"	3/8"
1360100075	3"	3/8"
1360100100	4"	3/8"
1360120100	4"	1/2"

Product #	Part
1360120101	Smart Sweeper Head 4"
1000200025	Hub Disc for Mini Smart Sweeper 2"
1360080002	Hub Disc for Mini Smart Sweeper 3"
1390125001	Hub Disc for Mini Smart Sweeper 4" & Smart Spider 4" & 6"
900000935	Mini Smart Sweeper Leg 2"
900000942	Mini Smart Sweeper Leg 3"
900000938	Mini Smart Sweeper Leg 4"
1300212025	Front Drill Head 1" for Mini Smart Sweeper 2"
1300214042	Front Drill Head 4 Flat 1.57"-2" for Mini Smart Sweeper 3"



Wire Cleaning Brush

Metal cleaning brush for removing fine dust or light mineral deposits in PVC and fragile pipes. Also used for Picote Brush Coating™ pipe preparation.

Product #	Pipe Size	Shaft Size
2125000050CL	2"	1/3"
2125000075CL	3"	1/3"
2125000100CL	4"	1/3"
2125000150CL	6"	1/3"
2125012100CL	4"	1/2"
2125012125CL	5"	1/2"
2125012150CL	6"	1/2"
2125012200CL	8"	1/2"
2125012225CL	9"	1/2"
2125012250CL	10"	1/2"
2125012300CL	12"	1/2"



Plastic Cleaning Brush

Plastic cleaning brush for removing fine dust or light mineral deposits in PVC and fragile pipes. For use with the Mini Cleaner.

Product #	Pipe Size	Shaft Size
2125000032CL	1/4"	1/3"
2125000040CL	1/2"	1/3"



Coating & Cleaning Brush

Custom designed, high-quality and long lasting brush with nylon bristles for Picote Brush Coating™ and cleaning PVC pipes. Clean with acetone and reuse.

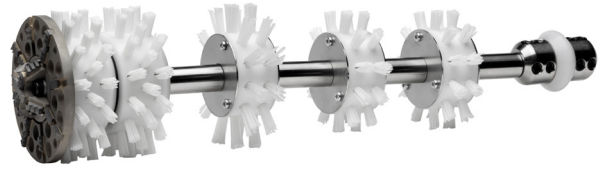
Product #	Brush & Pipe Size	Shaft Size
2120000037	1.5" for 1.25" Pipe	1/4"
2120000050	2" for 1.25" Pipe	1/3"
2120000075	3" for 2" Pipe	1/3"
2120000100	4" for 3" Pipe	1/3"
2120000125	5" for 4" Pipe	1/3"
2120000175	6.9" for 6" Pipe	1/3"
2120000220	8.7" for 8" Pipe	1/3"
2120010075	3" for 2" Pipe	3/8"
2120010100	4" for 3" Pipe	3/8"
2120010125	5" for 4" Pipe	3/8"
2120010150	6" for 4" Pipe	3/8"
2120010175	7" for 5" Pipe	3/8"
2120010200	8" for 6" Pipe	3/8"
2120010225	9" for 7" Pipe	3/8"
2120010250	10" for 8" Pipe	3/8"
2120012100	4" for 3" Pipe	1/2"
2120012125	5" for 4" Pipe	1/2"
2120012150	6" for 4" Pipe	1/2"
2120012175	7" for 5" Pipe	1/2"
2120012200	8" for 6" Pipe	1/2"
2120012225	9" for 7" Pipe	1/2"
2120012250	10" for 8" Pipe	1/2"
2120012275	11" for 9" Pipe	1/2"
2120012300	12" for 10" Pipe	1/2"
2120012350	14" for 12" Pipe	1/2"



Twister Concrete Remover

For efficient concrete, grout, slurry, & rock removal. Dual front brushes provide added stability while the heavy duty Front Metal Panel with large carbides and specialized Front Drill Head deliver great results.

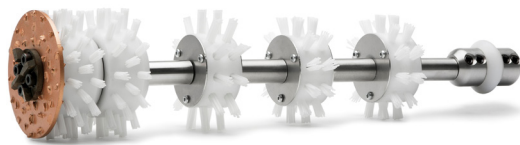
Product #	Model	Shaft Size
1234085100	4"	1/2"
1234125150	6"	1/2"
1234085100SA	4" + Steering Axle	1/2"
1234125150SA	6" + Steering Axle	1/2"



Tiger Twister Liner & Concrete Remover

Two tough jobs, one tougher tool. Remove failed CIPP lining twice as fast as with a regular Twister Liner Remover or remove concrete from the pipe. A must-have for every tool box.

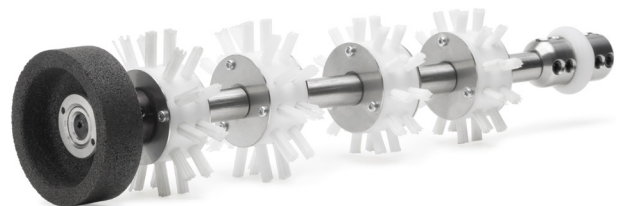
Product #	Model	Shaft Size
1263075100	4" Lined Pipe	1/2"
1263085100	4" Unlined Pipe	1/2"
1263115150	6" Lined Pipe	1/2"
1263125150	6" Unlined Pipe	1/2"



Twister Liner Remover

Features two front brushes for stability with a custom built Flat Drill Head. The Front Metal Panel has aggressive carbides resulting in efficient liner removal in cast iron and concrete pipes.

Product #	Model	Shaft Size
1233075100	4" Lined Pipe	1/2"
1233085100	4" Unlined Pipe	1/2"
1231115150Y	6" Lined Pipe	1/2"
1230125150Y	6" Unlined Pipe	1/2"



Twister Metal Grinder

1233075101N

- 4" pipe
- 1/2" Shaft

Quickly and efficiently grinds away most metal including rebar, steel rods, nails, screws, and lead joints in 4" pipes. Safe option even inside PVC and clay pipe.

Product #	Spare Part
900000776	Stone Replacement Head 4"

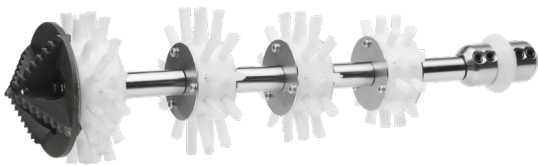
TWISTERS: REINSTATEMENTS



Twister Mini Flexi

For reinstatements through problematic bends, multiple bends or P-traps.

Product #	Model	Shaft Size
1230000054	2"	1/3"
1230000074	3"	1/3"



Twister Express

Time is money. Our fastest option for reinstating lined connections with an impressive initial opening inside cast iron, clay, concrete or PVC pipes.

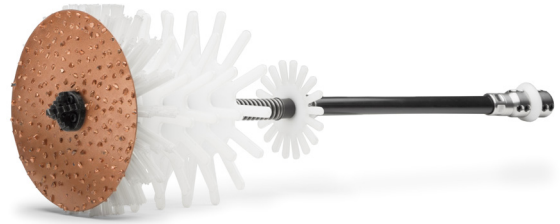
Product #	Model	Shaft Size
1230000052	2"	1/3"
1230000072	3"	1/3"
1230000372	3" Unlined Pipe	3/8"
1230000472	3" Lined Pipe	3/8"
1233075103	4" Lined Pipe	3/8"
1233085103	4" Unlined Pipe	3/8"
1230000371	3" Unlined Pipe	1/2"
1230000471	3" Lined Pipe	1/2"
1233075102	4" Lined Pipe	1/2"
1233085102	4" Unlined Pipe	1/2"

Tiger Front Cup Blade



Transform any Tiger Twister to a cup/hole saw style cutting head. The kit includes the Tiger Cup and mounting bolts to attach it to the Tiger Front Panel.

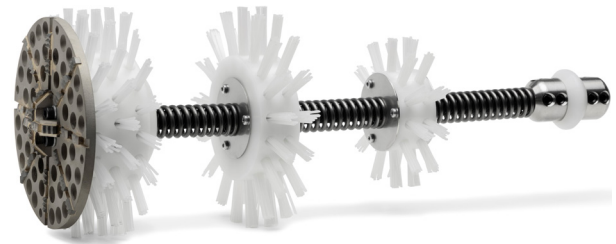
Product #	Model
1260001075	3" Kit
1260001085	3.3" Kit
1260001115	4.5" Kit
1260001125	5" Kit



Twister

Reinstatements inside clay, cast iron, concrete or plastic pipes. Brushes keep tool centred in the pipe.

Product #	Model	Shaft Size
1230075100Y	4" Lined Pipe	1/2"
1230085100Y	4" Unlined Pipe	1/2"
1230115150Y	6" Lined Pipe	1/2"
1231125150Y	6" Unlined Pipe	1/2"
1230175200Y	8"	1/2"



Tiger Twister Lateral Cutter

Reinstate connections even with Fiberglass Liners & UV Resins, creating an impressive initial opening. Features a precision Front Metal Panel and Front Drill Head equipped with extra-hard Tiger carbides.

Product #	Model	Shaft Size
1262075101	4" Lined Pipe	3/8"
1262085101	4" Unlined Pipe	3/8"
1262075100	4" Lined Pipe	1/2"
1262085100	4" Unlined Pipe	1/2"
1262090125	5" for Lined Pipe	1/2"
1262100125	5" Unlined Pipe	1/2"
1262115150	6" Lined Pipe	1/2"
1262125150	6" Unlined Pipe	1/2"
1262175200	8" Unlined Pipe	1/2"

Extend the life of pipes with the Picote Brush Coating™ System

Picote Brush Coating™ gives you options when rehabilitating pipes to prolong the lifespan. Clean the pipe well and apply two coats for a corrosion barrier. Alternatively, apply additional coats of resin to form a seamless new semi-structural pipe, providing a solution that should last 30-50 years.*



*Number of coats depends on pipe diameter.



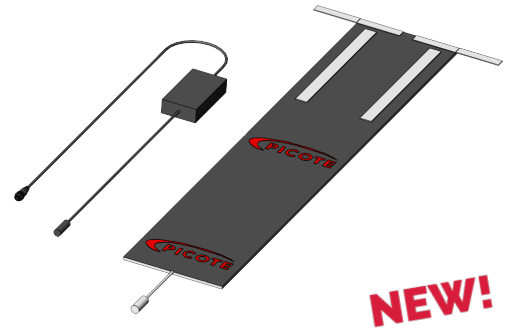
NEW!

Xpress Coating Pump System

- For 1 ¼ - 12" Pipes
- 131 ft range

Pipe Diameter: 1 ¼-12". Max Range: 131 ft
The new Xpress Brush Coating System provides faster curing times, no waste, less mess, and minimal setup time for revolutionary cost and time savings, featuring dual hydraulic resin cylinders. It has a built-in 24v, 882Wh battery providing several hours of working time. The new 1:1 epoxy features an increased thickness per layer and as little as 1 hour curing time between coats at 77°F. The system also includes a motorized Delivery Hose Reel that stores 131 ft of delivery hose on board, allowing for easier setup, movement and storage. Reel Heating Blanket also included for maintaining resin temperature, and 10x flexible mixing tips.

Product #	Model
2220300000US	110v



NEW!

Reel Heating Blanket

2220300004

Maintains hose reel resin temperature. Runs off pump battery. (140°F max).



Xpress Static Mixing Tip

NEW!

Product #	Part
2220300001	Static Mixing Tips & Y-Fitting Package (10pcs)
2220300006	Xpress Static Mixing Tip (10 pcs)
2220300007	Xpress Y-fitting for Mixing Tip



NEW!

Picote Xpress Resin

Xpress Epoxy Base and Catalyst mixes at 1:1 ratio. 100% Solids Epoxy features a superior thickness of 1mm per layer and as little as 1 hour curing time between coats at 77°F. Larger resin containers reduce waste and costs.

Product #	Resin
2220300005B	Picote Xpress Epoxy Base 2.94gal / 30.86lbs (Part A)
2220300005C	Picote Xpress Epoxy Catalyst 2.94gal / 24.15lbs (Part B)



Mini Coating Pump

- For 1¼-6" Pipes
- 75 ft range

Pipe Diameter: 1 ¼-6". Max Range: 75ft. Weight: 35.5 lbs Safely secures to Miller frame. Combine with the Mini Miller, Mini Cleaner, Super Battery Mini Miller or Super Battery Mini Cleaner for a portable compact system. Clean and coat with one simple system. Includes Resin Cup Package, 3x Hose Connectors, Hose Clamps and 2x Brush Stoppers.

Product #	Model
2220100002	110v

Hose Connector with Hose Clamps

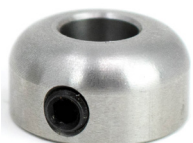
2220100007



Includes Hose Connector & Hose Clamps (10mm & 13mm).

Brush Stopper 1/3"

900000338



Provides extra security to keep the Coating Brush on the shaft. Includes one Brush Stopper.

Mini Coating Pump Hose



For inside pump housing. Precise measurements required. Consult the operating manual. Pre-cut package pieces cut to 9.4". 50pcs per package.

Product #	Part
2220100004	Mini Coating Pump Hose 82 ft
2220100011	Pre-cut Mini Coating Pump Hose (50 pcs)

Delivery Hose



For delivering Picote Dual Color Epoxy from Resin Cup to the Mini Pump and from the pump to the pipe.

Product #	Part
2220100003	Delivery Hose 82 ft
2220100009	Delivery Hose 656 ft

Hose Clamps

Use the 10mm Hose Clamps for the Mini Coating Pump Delivery Hose.



Use the 13mm Hose Clamps for the Mini Coating Pump Hose.

Product #	Part
9500000382	Hose Clamp 10mm
9500000381	Hose Clamp 13mm



Maxi Coating Pump

- For 3-12" Pipes
- 128 ft range

Pipe Diameter: 3-12". Max Range: 128 ft
Weight: 51 lbs Safely secures to Miller frame.
Combine with the Midi Cleaner, Super Midi or the Maxi Miller. Clean and coat with one simple system. When used with Midi Cleaner or Super Midi, add the Maxi Pump Bracket (9550004000). Includes: Maxi Pumping Hose Package, 10x Resin Cups and 2 Hose Clamps.

Product #	Model
2220200001	110v

Maxi Coating Pump Delivery Hose

2220200005



For delivering Picote Dual Color Epoxy from Resin Cup to the Maxi Pump and from the pump to the pipe. 656 ft package.

Maxi Pumping Hose Package

2220200003



Includes 10pcs in a package with 2x Hose Connector per piece. For inside pump housing.

Hose Clamp 16mm

900000902



For the Maxi Coating Pump Delivery Hose. Includes one Hose Clamp.

Brush Stopper 1/2"

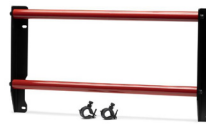
900000756



Provides extra security to keep the Coating Brush on the shaft. Includes one Brush Stopper.

Maxi Pump Bracket for Midi Cleaner & Super Midi

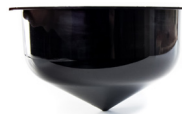
9550004000



Attaches Maxi Coating Pump to a Midi Cleaner or Super Midi Miller frame.

Coating Resin Cup Package

2220200004



Maxi Pump & Mini Pump 10pcs in a package. Same resin cup size for Mini & Maxi Pumps



Picote Heater

Decrease time between coats for Picote Brush Coating™ system. Includes 16ft Heater Hose. Air outlet temperature is limited to 131F. Automatic thermal cut-out in both motor and heating element. Max. air velocity up to 100m/s and max. air volume 2.20m³/min. Minimal noise: 78dBA.

Product #	Model/Part
1350000024US	Picote Heater 110v
9990001099	Heater Hose 16.4 ft

Cartridge Tip & Nut

2110000001

2110000002



Maxi Pump & Mini Pump Package of 10 Static Mixing Tips. Package of 10 Nuts.

Delivery Hose Lube 1 Quart

2110000003



To pre-lubricate inner surface of Coating Pump Delivery Hose to make pumping faster. If you find it difficult to push the brush/hose assembly through pipes with bends you can also apply a small amount to reduce pipe friction.

Picote Dual Color Epoxy Kits



For use with the Mini and Maxi Coating Pump. 6 Cartridge Kit (6x White) or (6x Grey) with 8 Tips & 3 Nuts.

Product #	Model/Part
2110001001W	Picote White Epoxy Kit, 12lbs 5oz
2110001001G	Picote Gray Epoxy Kit, 12lbs 5oz
2110001011	Picote Fast Cure White Epoxy Kit, 12lbs 5oz
2110001012	Picote Fast Cure Gray Epoxy Kit, 12lbs 5oz

Picote Fiber Bonded Mastic 14lbs 10oz, White

2110002001



6 Cartridge Kit with 8 Tips & 3 Nuts. Used to protect new infrastructure and to rehabilitate existing damaged infrastructure, including manholes, steel substrates, floor and wall penetrations/cracks, wet wells, vaults & septic tanks. Extreme bonding to nearly all substrates. Fast curing & easy workability. 1/4" build capability with no sag. Use with the Smart Mixer, no mixing means faster application.

Picote Smart Fill

2110002004



6 cartridges per case. Specially designed flowable fill product that can be used to fill in the bottom of fully deteriorated piping or areas where holes and voids exist. Remove excess foam in pipe with the Picote Premium Cyclone Chain (3" or bigger pipe) or Picote Smart Cutter™ (2" or smaller pipe). Then you are ready to line or coat the pipe. Use with the Smart Mixer 2.0, cartridge tip, and resin supply hose to apply directly to the pipe.

Picote Smart Mixer 2.0

For use with the Mini & Maxi Pump. Battery powered variable speed cartridge mixer in carrying case with spare battery, charger & additional large piston. A highly useful tool for accurate and proven mixing results when pumping the 2 part epoxies for coating, Smart Fill, and trowelable mastic used for repairing various structures.



Product #	Model/Part
2130001001	Smart Mixer 2.0 110v
2130001008	Spare Li-ion Battery
2130001007US	Battery Charger

Coating & Cleaning Brush



Custom designed, high-quality and long lasting brush with nylon bristles for Picote Brush Coating™ and cleaning PVC pipes. Clean with acetone and reuse.

Product #	Brush & Pipe Size	Shaft Size
2120000037	1.5" for 1.25" Pipe	1/4"
2120000050	2" for 1.25" Pipe	1/3"
2120000075	3" for 2" Pipe	1/3"
2120000100	4" for 3" Pipe	1/3"
2120000125	5" for 4" Pipe	1/3"
2120000175	6.9" for 6" Pipe	1/3"
2120000220	8.7" for 8" Pipe	1/3"
2120010075	3" for 2" Pipe	3/8"
2120010100	4" for 3" Pipe	3/8"
2120010125	5" for 4" Pipe	3/8"
2120010150	6" for 4" Pipe	3/8"
2120010175	7" for 5" Pipe	3/8"
2120010200	8" for 6" Pipe	3/8"
2120010225	9" for 7" Pipe	3/8"
2120010250	10" for 8" Pipe	3/8"
2120012100	4" for 3" Pipe	1/2"
2120012125	5" for 4" Pipe	1/2"
2120012150	6" for 4" Pipe	1/2"
2120012175	7" for 5" Pipe	1/2"
2120012200	8" for 6" Pipe	1/2"
2120012225	9" for 7" Pipe	1/2"
2120012250	10" for 8" Pipe	1/2"
2120012275	11" for 9" Pipe	1/2"
2120012300	12" for 10" Pipe	1/2"
2120012350	14" for 12" Pipe	1/2"



Midi Roller & Wet-Out Station

Hybrid unit for wetting-out 2-9" CIPP liners. Lightweight (40lbs) and compact unit can be powered by the integrated battery (approx. 10h of working time) chargeable while in use, and can be run indefinitely while plugged into a power outlet, allowing you to work anywhere without access to electricity. Variable speed and bi-directional controls. Size: 14.2x19.1x10.4" Speed: 9-29.5ft/min(variable). Gapping: 4-14mm (0.5mm increments).

The Wet-Out Station is an innovative, practical addition to the Midi Roller. Quickly & easily set up on the job site. No additional power source needed – powered by the Midi Roller. Built-in wheels and transport handle. Weight: 79.4lbs. Size (folded): 61x24.9x11.3". Belt Length: 47.2".

Product #	Product
2390000010US	Midi Roller
2390000040	Wet-Out Station
2390000020US	Midi Roller & Wet-Out Station Package

Picote Mini Roller

2390000000



Drill Powered roller for wetting-out short 2-6" liners.

Liner Holders



For securing the liner while pouring resin. Custom designed models for the Picote Mini Roller & Picote Midi Roller available.

Product #	Part/Model
2360201050	2" for Midi Roller
2360201075	3" for Midi Roller
2360201100	4" for Midi Roller
2360201150	6" for Midi Roller
2360201200	8" for Midi Roller
2360101050	2" Narrow for Mini Roller
2360101075	3" Narrow for Mini Roller
2360101100	4" Narrow for Mini Roller
2360101150	6" Narrow for Mini Roller

Picote Liner Glider

2380000000



Manual roller for wetting-out 2-4" liners. Comes equipped with easy to change color coded and size stamped gap setting rings for almost any liner thickness you may need.



Vacuum for Liners

2390000030US

Max flow: 35.9 GPM. Max vacuum: 11.6 psi. Max power: 200W. Battery operated: 24V 250Wh (can be used when charging). Vacuum air filter (reusable). 1/3" clear suction hose and suction cups.



Picote Pressure Guard

6100000040US

A compact, easy to use device for monitoring constant air pressure, temperature, and power. Can be attached to monitor either the air compressor or the liner/equipment, a smart device based on IoT technology. Package includes coupling, sensor & cord and 2 year data subscription.

Air Pressure Regulator



Use PN 2340000001US (0-29 PSI model) with Connection Collar Installation Tool, Picote Cannons & Picote Drums. Use PN 2340000002US (0-58 PSI model) for Picote Pro Packers.

Product #	Model
2340000001US	0-29 PSI
2340000002US	0-58 PSI



Liner Compressor

2350050150

Quickly and tightly clamps the end of the liner to prevent it collapsing from loss of pressure while replacing CIPP inversion equipment with a Curing Cap or Picote Cannon Fast Cap. For 2-6" liners.



Picote Original Cannon

2360000001US

A lightweight & transparent tool for short CIPP installations. Max liner: 2"/49.2ft, 3"/32ft & 4"/23ft. Includes 3 Inversion Heads (2,3,& 4") and 1 Fast Cap. Comes with Picote Cannon Air Sealing Package, which allows a CCTV camera to be pushed through the Cannon into the pipe. View the liner throughout the installation curing process!



Picote Mini Cannon

2360000003US

A lightweight & transparent tool for short CIPP installations. Max Liner: 2"/24.6ft, 3"/16ft & 4"/11.5ft. Includes 3 Inversion Heads (2,3, & 4") and 1 Fast Cap. Comes with Picote Cannon Air Sealing Package, which allows a CCTV camera to be pushed through the Cannon into the pipe. View the liner throughout the installation curing process!

Cannon Spare Parts

Product #	Spare Part
900000504	Inversion Head 2"
900000505	Inversion Head 3"
900000506	Inversion Head 4"
900000828	Picote Cannon Cap

Cannon Fast Cap 2360000004US



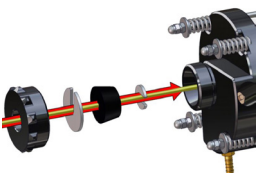
Cure multiple liners after CIPP inversion with the Cannon.

Picote Cannon Cap with Hole 900000759



Push CCTV camera through the Cannon. Use in conjunction with Cannon Air Sealing Package.

Cannon Air Sealing Package 900000923



Allows a CCTV camera to be pushed through the Cannon into the pipe. View the liner throughout the installation curing process! Use in conjunction with Picote Cannon Cap with Hole.

Cannon Fast Cap with Smart Heat Cable Inlet 2360000005US



Enables the use of Smart Heat Cable with Picote Cannon in order to make the curing process faster. Package includes both Mini and Maxi Smart Heat Cable gaskets. Remove gasket to use as Standard Fast Cap without heating cable.

Smart Heat Cable



Lightweight and great value. Speed up ambient CIPP curing process up to 35%. Environmentally friendly option with no risk of water damage. No need for hot water or steam. Use with a Maxi Smart Heat Curing Cap.

Product #	Length
3430000005US	16 ft
3430000010US	32 ft
3430000015US	48 ft

Smart Heat Curing Cap



The Smart Heat Cable is pushed through Curing Cap to the liner.

Product #	Model
2340005050US	2"
2340005070US	3"
2340005100US	4"
2340005150US	6"

Curing Cap



For replacing inversion equipment in order to be able to install multiple liners.

Product #	Model
2340000050US	2"
2340000070US	3"
2340000100US	4"
2340000150US	6"
2340000200US	8"



Basic Starter Package 2 for Shorter Liners 2-4"

1010000007US

Includes Original Cannon, 3 Inversion Heads (2", 3", 4"), 1 Fast Cap, Smart Roller, Liner Compressor 3.0, Smart Heat Cable 32ft, Air Pressure Regulator & Cannon Fast Cap for Smart Heat Cable. Convenient starter package for installing short liners: 2"/49.2ft, 3"/32ft & 4"/23ft.



Basic Starter Package for Shorter Liners 2-4"

1010000006US

Includes Mini Cannon, 3 Inversion Heads (2", 3", 4"), 1 Fast Cap, Liner Glider, Liner Compressor 3.0, Smart Heat Cable 32ft, Air Pressure Regulator & Cannon Fast Cap for Smart Heat Cable. Convenient starter package for installing short liners: 2"/24.6ft, 3"/16ft & 4"/11.5ft.

Picote Branch Lining Glue



Glue used for calibration hose and liner in open-end lining process. Can be used with steam up to 140 °F.

Product #	Size
1320001001	35 fl oz
1320001000	10 fl oz



Gluing Tool

For gluing open-end calibration hose to liner.

Product #	Model
1320050050US	Gluing Tool 2"
1320050070US	Gluing Tool 2-3" / One Size 3"
1320070100US	Gluing Tool 3-4" / One Size 4"
1320100150US	Gluing Tool 4-6" / One Size 6"
1320150200US	Gluing Tool 6-8" / One Size 8"



Brush for Gluing

2300000004

Preparation for Open-Ended Liners.



Steel Tie Gun

900000600

Preparation for Open-Ended Liners.



Stainless Steel Cable Tie (100pcs)

900000601

Preparation for Open-Ended Liners.

Picote Midi Steamer

NEW!

Provides superior CIPP steam curing. Can be used in conjunction with the Picote Connection Collar System. Featuring a steam/air mixture temperature sensor, paired with a digital thermostat that can be adjusted to the desired setting. Its automatic system shuts down when low water level is detected. Pair with the Picote Pressure Guard to remotely monitor steam outlet temperature & pressure. Steaming End Package (2400000006) allows the Picote Midi Steamer to be used in conjunction with short CIPP liner curing (2-3" & 4-6" pipes).



240V Single Power 30A: Single power cord with 240V/30 Amp plug (same as the 240V Maxi Miller). Single power setting. Highest power of all Midi Steamers at 3200W.

110V Dual Power 15A: Two power cords which connect to regular household 15A sockets (must be on separate fuses). Allows use of the Midi Steamer in almost any situation. If only using one cord the power is 1450W. Second cord adds 1400W for a combined power of 2850W.

110V Single Power 30A: Single power cord with 110V/30A plug (same as the 110V Maxi Miller). Two power settings (1450 and 1400W) with a combined power of 2850W.

Product #	Model
2400000001US	240V Single Power 30A
2400000002US	110V Dual Power 15A
2400000003US	110V Single Power 30A
2400000005US	Steamer Air Hose 79"
2400000006	Steaming End Package

Picote Smart Control Unit

1410000047US

Brings unparalleled ease-of-use and efficiency. Featuring a versatile dual-function design, this device expertly combines air pressure control and vacuum regulation capabilities. Seamlessly manage pressure and vacuum down Picote Connection Collars with a simple flip of a lever, reducing set-up time and improving productivity. Take control of your pressure and vacuum needs in one efficient, robust, and portable package.

NEW!



Installation Tool 2.0

Can be used for both ambient and steam curing. A unique cap design allows the use of an integrated one-way flow/steam port.

Product #	Model
1410000021	Head 1.22" for 3" & 4" installations
1410000022	Head 2" for 6" installations
1410000048	Head 3.58" for 8" & 9" installations

Strapping Tool & Cable Ties

1410000029
1410000031



Use with the stainless steel Cable Ties (1410000031) to make the connection between the Installation Tool Head and Bladder airtight. Cable Ties come in packages of 25 pieces.



Turning Handle

1410000024US

The Turning Handle makes positioning the Connection Collar easy. An air valve facilitates the inflation process, so you are able to control how much pressure/air you let into the Bladder. This allows you to guide the Connection Collar to the precise location before fully inflating it.

Air Pressure Regulator 0-29 PSI

2340000001US



0-29 PSI model for use with the Picote Connection Collar System.



Push Rod 0.86" for 3-6" Pipes

1410000023

Designed to be both strong enough to push and rotate, while also flexible enough to go through multiple bends when needed. Can also be used with steam curing. Available in 5 ft lengths.



Push Rod 0.94" for 4-9" Pipes

1410000032

A more rigid rod for longer runs and larger pipes. Designed to be both strong enough to push and rotate, while also flexible enough to go through multiple bends when needed. Can also be used with steam curing. Available in 5 ft lengths.

Installation Tool 2.0 Air Adapter

1410000025US



Designed to replace the Turning Handle during the wet-out and curing process. This allows the release of the Turning Handle, in order to be used while the previous installation is curing.

Pocket Vacuum

1410000000US



For vacuum and installation of Connection Collars.

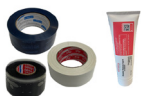
Installation Tool 2.0 Accessories Starter Kit

1410000035WO

1410000035



Includes Hybrid Tape, Sealing Tape, Cover Tape, Bladder Release Agent, & Bladder Lubricant Oil or Spray in a Picote Tool Bag.



Product number ending in WO comes with Bladder Lubricant Oil.

Installation Tool Hybrid Tape

1410000026



Ideal for securing the Connection Collar before installation. 134 ft roll.

Installation Tool Sealing Tape

1410000027



Provides a complete seal between the Installation Tool Head and Bladder. Also has a high temperature resistance to work when using steam. 9.8 ft roll.

Installation Tool Cover Tape

1410000028



Strong tape used to cover the clamps which hold the Bladder on the Tool Head. 164 ft roll.

Hose Clamp



An alternative to the Strapping Tool and Cable Ties. To be used with Installation Tool Heads for clamping bladders on the head.

Product #

Model

9500000385

For 3" & 4" installations

9500000387

For 6" installations

9500000388

For 8" & 9" installations

Bladder Release Agent

1410000039



Prevents Epoxy from sticking to the Bladder, allowing for easy removal of the Bladder.

Silicone Glue 3 oz

1410000038



For repairing/patching holes on bladders.



Install T Or Y Connection Collars With Ease

Picote's upgraded Connection Collar System seals main line and lateral connections protecting against infiltration and exfiltration. Access from main line or lateral. The Sealed Connection Collar seams eliminate the risk of resin leakage and the black seam thread makes it very easy to visually line up the connection for perfect installations — with optional steam curing for even faster project completion.



Picote Push Rods

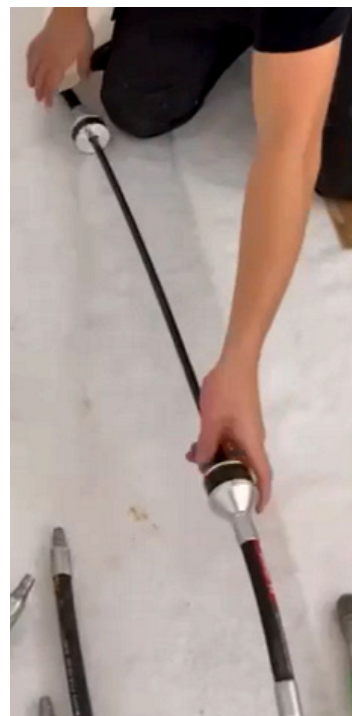


Picote's unique, fully taped-seam Connection Collars and custom Push Rods enable an easy rehabilitation of lateral connections. The fully taped seams eliminate risk of resin leakage, creating a high-quality connection. Optional steam curing for faster project completion

available. Bypass pumping is needed during opening and installing of Connection Collars. The new Picote Midi Steamer was developed with this application in mind.

Installation Tool Heads

Three Installation Tool Head sizes available. Tool Heads can be used for both ambient and steam curing. The two-way Installation Tool gives added versatility. Continued innovation at Picote, the newly upgraded Connection Collar System is simplified and easy to install.

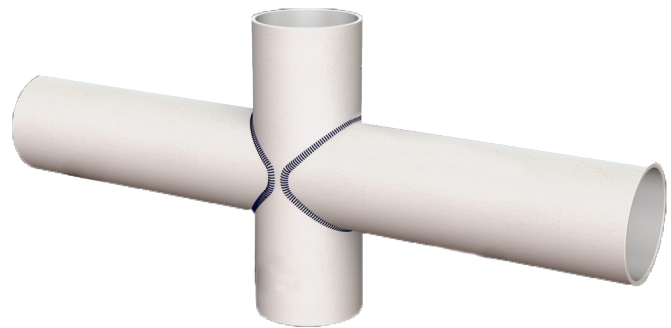


Sealed Connection Collars

Product #	Size & Shape
1418007050T	3"/2" T
1418007050Y	3"/2" Y
1418007070T	3"/3" T
1418007070Y	3"/3" Y
1418010050T	4"/2" T
1418010050Y	4"/2" Y
1418010070T	4"/3" T
1418010070Y	4"/3" Y
1418100100T	4"/4" T
1418100100Y	4"/4" Y
1418125050T	5"/2" T
1418125050Y	5"/2" Y
1418125070T	5"/3" T
1418125070Y	5"/3" Y
1418125100T	5"/4" T
1418125100Y	5"/4" Y
1418125125T	5"/5" T
1418125125Y	5"/5" Y
1418150070T	6"/3" T
1418150070Y	6"/3" Y
1418150100T	6"/4" T
1418150100Y	6"/4" Y
1418150125T	6"/5" T
1418150125Y	6"/5" Y
1418150150T	6"/6" T
1418150150Y	6"/6" Y
1418200100T	8"/4" T
1418200100Y	8"/4" Y
1418200150T	8"/6" T
1418200150Y	8"/6" Y
1418200200T	8"/8" T
1418200200Y	8"/8" Y
1418225100T	9"/4" T
1418225100Y	9"/4" Y
1418225150T	9"/6" T
1418225150Y	9"/6" Y
1418225200T	9"/8" T
1418225200Y	9"/8" Y
1418225225T	9"/9" T
1418225225Y	9"/9" Y

Double Connection Collars

Product #	Pipe Size & Shape
1419100707T-90	4"/3"/3"-T-connection-90° between connections
1419100707Y-90	4"/3"/3"-Y-connection-90° between connections
1419100707T-180	4"/3"/3"-T-connection-180° between connections
1419100707Y-180	4"/3"/3"-Y-connection-180° between connections
1419101010T-90	4"/4"/4"-T-connection-90° between connections
1419101010Y-90	4"/4"/4"-Y-connection-90° between connections
1419101010T-180	4"/4"/4"-T-connection-180° between connections
1419101010Y-180	4"/4"/4"-Y-connection-180° between connections
1419151010T-90	6"/4"/4"-T-connection-90° between connections
1419151010Y-90	6"/4"/4"-Y-connection-90° between connections
1419151010T-180	6"/4"/4"-T-connection-180° between connections
1419151010Y-180	6"/4"/4"-Y-connection-180° between connections



New! Glass Fiber (GRP) Connection Collars

Picote has developed a glass fiber (GRP) Connection Collar. These can be installed using silicate resin for a faster result and with the increased structural integrity that glass fiber offers. Long collars enable the material to meet global standards. The GRP system installation process is simple and customer friendly, with less mess and waste. A fast installation also means a reduction in labor costs and increase in productivity.

GRP Connection Collars

Product #	Size & Shape
1411100100T	4"/4" T
1411100100Y	4"/4" Y
1411150100T	6"/4" T
1411150100Y	6"/4" Y
1411150150T	6"/6" T
1411150150Y	6"/6" Y
1411200100T	8"/4" T
1411200100Y	8"/4" Y
1411200150T	8"/6" T
1411200150Y	8"/6" Y
1411200200T	8"/8" T
1411200200Y	8"/8" Y
1411225100T	9"/4" T
1411225100Y	9"/4" Y
1411225150T	9"/6" T
1411225150Y	9"/6" Y
1411225225T	9"/9" T
1411225225Y	9"/9" Y
1411250100Y	10"/4" Y
1411250150Y	10"/6" Y
1411250200Y	10"/8" Y
1411250250Y	10"/10" Y
1411300100T	12"/4" T
1411300100Y	12"/4" Y
1411300150T	12"/6" T
1411300150Y	12"/6" Y
1411300225T	12"/9" T
1411300225Y	12"/9" Y
1411300300T	12"/12" T
1411300300Y	12"/12" Y

Picote Bladders

Silicone Bladders available for T and Y connection collar installations, as well as straight bladders (no connection) and double connection bladders. Designed for use with epoxy or silicate resin systems. 1m length.



Picote Bladders

Product #	Size & Shape
1416007050T	3"/2" T
1416007050Y	3"/2" Y
1416007070T	3"/3" T
1416007070Y	3"/3" Y
1416010050T	4"/2" T
1416010050Y	4"/2" Y
1416010070T	4"/3" T
1416010070Y	4"/3" Y
1416100100T	4"/4" T
1416100100Y	4"/4" Y
1416125070T	5"/3" T
1416125070Y	5"/3" Y
1416125100T	5"/4" T
1416125100Y	5"/4" Y
1416125125T	5"/5" T
1416125125Y	5"/5" Y
1416150070T	6"/3" T
1416150070Y	6"/3" Y
1416150100T	6"/4" T
1416150100Y	6"/4" Y
1416150150T	6"/6" T
1416150150Y	6"/6" Y
1416200100T	8"/4" T
1416200100Y	8"/4" Y
1416200150T	8"/6" T



Picote Bladders

1416200150Y	8"/6" Y
1416200200T	8"/8" T
1416200200Y	8"/8" Y
1416225100T-B	9"/4" T
1416225100Y-B	9"/4" Y
1416225150T-B	9"/6" T
1416225150Y-B	9"/6" Y
1416225200T-B	9"/8" T
1416225200Y-B	9"/8" Y
1416225225T-B	9"/9" T
1416225225Y-B	9"/9" Y
1416250100T	10"/4" T
1416250100Y	10"/4" Y
1416250150T	10"/6" T
1416250150Y	10"/6" Y
1416250200T	10"/8" T
1416250200Y	10"/8" Y
1416250250T	10"/10" T
1416250250Y	10"/10" Y
1416300100T	12"/4" T
1416300100Y	12"/4" Y
1416300150T	12"/6" T
1416300150Y	12"/6" Y
1416300200T	12"/8" T
1416300200Y	12"/8" Y
1416300225T	12"/9" T
1416300225Y	12"/9" Y
1416300250T	12"/10" T
1416300250Y	12"/10" Y
1416300300T	12"/12" T
1416300300Y	12"/12" Y



Straight/Double Connection Bladders

Product #	Pipe Size & Shape
1416070001	Picote Bladder 3" (no connection) 3.2ft long
1416100001	Picote Bladder 4" (no connection) 3.2ft long
1416150001	Picote Bladder 6" (no connection) 3.2ft long
1417100707T-90	4"/3"/3"-T-connection-90° between connections
1417100707Y-90	4"/3"/3"-Y-connection-90° between connections
1417100707T-180	4"/3"/3"-T-connection-180° between connections
1417100707Y-180	4"/3"/3"-Y-connection-180° between connections
1417101010T-90	4"/4"/4"-T-connection-90° between connections
1417101010Y-90	4"/4"/4"-Y-connection-90° between connections
1417101010T-180	4"/4"/4"-T-connection-180° between connections
1417101010Y-180	4"/4"/4"-Y-connection-180° between connections
1417151010T-90	6"/4"/4"-T-connection-90° between connections
1417151010Y-90	6"/4"/4"-Y-connection-90° between connections
1417151010T-180	6"/4"/4"-T-connection-180° between connections
1417151010Y-180	6"/4"/4"-Y-connection-180° between connections

New! Picote Pro Packer Series



The Picote Pro Packer series offers upgraded tools with new innovation. When needed, navigational guides assist the packer through various pipe bends and turning into secondary lines. Two different models in various sizes available, the Bendy and 3D Packer.

Packer Navigation System



Assists the packer through various pipe bends and turning into secondary lines.

Product #	Pipe Size	Diameter
151000001	2-3"	30mm
151000002	4-6"	60mm
151000003	8"+	80mm

Installation Tool 2.0 Air Adapter

1410000025US



Designed to replace the Turning Handle during the wet-out and curing process. This allows the release of the Turning Handle, in order to be used while the previous installation is curing.

Air Pressure Regulator 0-58 PSI

2340000002US



0-58 PSI model for use with Picote Pro Packers.

Front Wheel Drive Glass Fiber Rod

1510000004



131ft of 1/3" glass fiber rod in a vertical frame. Frame is galvanized.



Push Rod 0.86" for 3-6" Pipes

1410000023

Designed to be both strong enough to push and rotate, while also flexible enough to go through multiple bends when needed. Can also be used with steam curing. Available in 5 ft lengths.



Push Rod 0.94" for 4-9" Pipes

1410000032

A more rigid rod for longer runs and larger pipes. Designed to be both strong enough to push and rotate, while also flexible enough to go through multiple bends when needed. Can also be used with steam curing. Available in 5 ft lengths.

Packer Ordering Guide

Use standard Picote Bendy & 3D Packers with Picote's new high quality Push Rods. Both Pro Packer series also available with customized couplings to fit your existing push rods. To order standard Picote Packers with Picote Standard Male Coupling, please use the normal Packer product number (PN). For other coupling types please see the table below and add the product number extension to the standard Picote product number of the Packer size required.

Packer Coupling Required	Product Number Extension
Picote Standard Male	No extension required
Steinco 161 Female	_SC161
Standard EU Male	_EU
Steinco 126 Female without Hexagon (fits to Standard EU Male fitting)	_EUF
Steinco 126 Female with Hexagon	_SC126

The **Picote Bendy Packers** are specially designed for repairs in pipe bends but work great in straight sections too! They expand from the middle to ensure a wrinkle-free end result. These packers can be pushed through several bends to the renovation location through the innovative and patented Front Wheel Drive system which allows them to travel longer distances and easily navigate through multiple 90° bends.

The **Picote 3D Packers** are designed for straight repairs in pipes and can repair multiple dimensional offsets. These packers can be pushed through several bends to the renovation location through the innovative and patented Front Wheel Drive system which allows them to travel longer distances and navigate through multiple 90° bends.



Bendy Packers

Product #	Pipe Size & Color	Length
1510050060_3US ¹	2" (Black)	24"
1510050060_5US ²	2" (Black)	24"
1510050100_3US ¹	2" (Black)	39"
1510050100_5US ²	2" (Black)	39"
1510070060_5US ²	3" (White)	24"
1510070060_10US ³	3" (White)	24"
1510070100_5US ²	3" (White)	39"
1510070100_10US ³	3" (White)	39"
1510100060	3-4" (Green)	24"
1510100100	3-4" (Green)	39"
1510100120	3-4" (Green)	47"
1510100150	3-4" (Green)	59"
1510100200	3-4" (Green)	79"
1510125100	4-6" (Blue)	39"
1510125120	4-6" (Blue)	47"
1510125150	4-6" (Blue)	59"
1510125200	4-6" (Blue)	79"
1510200150	6-8" (Red)	59"
1510200200	6-8" (Red)	79"



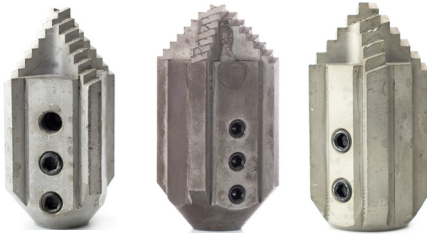
3D Packers

Product #	Pipe Size & Color	Length
1511075100_5US ²	2-3" (Black)	39"
1511075100_10US ³	2-3" (Black)	39"
1511075150_5US ²	2-3" (Black)	59"
1511075150_10US ³	2-3" (Black)	59"
1511075200_5US ²	2-3" (Black)	79"
1511075200_10US ³	2-3" (Black)	79"
1511075250_5US ²	2-3" (Black)	98"
1511075250_10US ³	2-3" (Black)	98"
1511075300_5US ²	2-3" (Black)	118"
1511075300_10US ³	2-3" (Black)	118"
1511100100	3-4" (Green)	39"
1511100150	3-4" (Green)	59"
1511100200	3-4" (Green)	79"
1511100300	3-4" (Green)	118"
1511100400	3-4" (Green)	157"
1511100500	3-4" (Green)	197"
1511150060	4-6" (Blue)	24"
1511150100	4-6" (Blue)	39"
1511150150	4-6" (Blue)	59"
1511150200	4-6" (Blue)	79"
1511150300	4-6" (Blue)	118"
1511150350	4-6" (Blue)	138"
1511150400	4-6" (Blue)	157"
1511150500	4-6" (Blue)	197"
1511250100	6-10" (Red)	39"
1511250150	6-10" (Red)	59"
1511250200	6-10" (Red)	79"
1511250300	6-10" (Red)	118"
1511250400	6-10" (Red)	157"
1511250500	6-10" (Red)	197"

1 – includes 9 ft integrated push rod, 2 – includes 16 ft integrated push rod, 3 – includes 32 ft integrated push rod

Special Drill Head Cutter

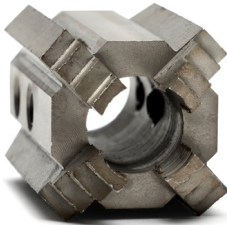
For use in cast iron pipes for initial liner opening and blockages. Square design/side blades allow the cutter to tumble on obstacles/connections to make hole larger than physical size of drill head.



Product #	Drill Size	Pipe Size	Shaft Size
1310820029	0.8x1.1"	1.25-1.5"	1/3"
1310820042	0.8x1.6"	2"	1/3"
1310830055	1.2x2.2"	2-3"	1/3"
1311030055	1.1x2.1"	3"	3/8"
1311040071	1.5x2.8"	3"	3/8"
1311050091	2x3.5"	3-4"	3/8"
1311230055	1.1x2.1"	3"	1/2"
1311240071	1.5x2.8"	3"	1/2"
1311250091	2x3.6"	3-4"	1/2"

Special Drill Head Cutter 2.0

Similar features to the Standard Cutter but works better for cutting through soft materials. Drill head stays sharper when used for reinstatements.



Product #	Drill Size	Pipe Size	Shaft Size
1310833055	1.2x2.2"	2-3"	1/3"
1311033055	1.1x2.1"	3"	3/8"
1311034071	1.5x2.8"	3-4"	3/8"
1311035091	2x3.5"	3-4"	3/8"
1311233055	1.2x2.2"	3"	1/2"
1311234071	1.6x2.8"	3-4"	1/2"
1311235091	2x3.6"	3-4"	1/2"

Special Drill Head PVC

Drill head with safety ring to safely operate inside PVC & clay pipes and make initial cut.



Product #	Drill Size	Pipe Size	Shaft Size
1310812029	0.9x1.1"	1.25-1.5"	1/3"
1310812042	0.9x1.6"	2"	1/3"
1310813055	1.3x2.2"	2-3"	1/3"
1311013055	1.1x2.1"	3"	3/8"
1311014071	1.5x2.8"	3"	3/8"
1311015091	2x3.6"	3-4"	3/8"
1311213055	1.2x2.2"	3"	1/2"
1311214071	1.6x2.8"	3"	1/2"
1311215091	2x3.6"	3-4"	1/2"

Special Drill Head 3D

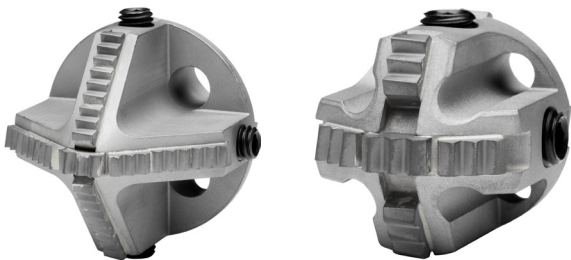
3D model has reverse angled cutting edges allowing the drill head to be pulled backwards to enlarge initial opening made by smaller standard Special Drill Head/Bore.



Product #	Drill Size	Pipe Size	Shaft Size
1310823055	1.2x2.2"	2-3"	1/3"
1311223055	1.2x2.2"	3"	1/2"
1311224071	1.6x2.8"	3"	1/2"
1311225091	2x3.6"	3-4"	1/2"

Tiger Bores

Highly efficient at reinstating lined connections and opening up blockages. Cut through collapsed liners to make room for larger removal tools. Remove grout & concrete. Tiger carbides ensure maximum working efficiency, durability, and power.



Product #	Drill Size	Pipe Size	Shaft Size
1261084040	1.5"	2-3"	1/3"
1261010030	1.2"	3"	1/3"
1261125030	1.2"	3"	3/8"
1261125050	2"	3-4"	3/8"
1261125040	1.5"	3"	1/2"
1261010050	2"	3-4"	1/2"



Hub & Hub Disc Packages

Pre-packaged Picote Smart Cutter™ Hubs and corresponding Hub Discs included.

Product #	Hub Size	Hub Disc	Pipe Size	Shaft Size
1000820050-PKG	2"	2W	3"	1/3"
1000820075-PKG	3"	2W	4"	1/3"
1000835050A-PKG	3"	S	3-4"	1/3"
1001020050-PKG	2"	2W	3"	3/8"
1001020075-PKG	3"	2W	4"	3/8"
1001035050A-PKG	3"	S	3-4"	3/8"
1001035075A-PKG	3"	S	3-4"	3/8"
1001040100A-PKG	4"	S	4-6"	3/8"
1001235050A-PKG	3"	S	3-4"	1/2"
1001235075A-PKG	3"	S	3-4"	1/2"
1001240100A-PKG	4"	L	4-6"	1/2"
1001240150A-PKG	6"	L	6-9"	1/2"
1001240200A-PKG	8"	L	8-9"	1/2"
1001250100A	4"	XL	4-6"	1/2"
1001250150A	6"	XL	6-8"	1/2"



Hubs - No Wedge

2 Panel Hubs with No Wedge. Use with Side Grinding Panels with no wedge.

Product #	Hub Size DxL	Pipe Size	Shaft Size
1000612025	.47x1"	1¼-1½"	1/4"
1000615025	.6x1"	1¼-1½"	1/4"
1000615030	.6x1.18"	1¼-1½"	1/4"
1000818025	.7x.98"	1¼-2"	1/3"
1000820040	.8x1.57"	2"	1/3"
1000820060	.8x2.36"	2-3"	1/3"
1001020040	.8x1.57"	2"	3/8"
1001020060	.8x2.36"	2-3"	3/8"

Picote Smart Cutter™ Hub Selection Guide

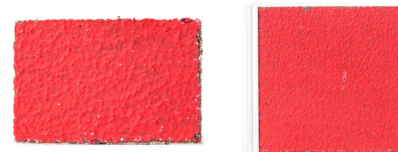


Hub Discs



Hub Discs for 2, 4 & 6 panel Hubs. See the Smart Cutter™ Hub Selection Guide on the Picote Institute.

Product #	Disc	Size
1000200020	2W	0x20x6
1000200035	S	0x35x6
1000200040	L	0x40x6
1000200050	XL	0x50x3
1350000100	Screws for Hub Disc (12pcs)	



Side Grinding Panels

Sold in packages of 12. See the Smart Cutter™ Hub Selection Guide on the Picote Institute.

Product #	Panel Size
1202025040*	1x1.6"
1202030050*	1.2x2"
1202040060*	1.5x2.33"
1202050100*	2x4"
1203050100	2x4"
1202075125	3x5"
1202100100	4x4"
1202100150	4x6"
1202150150	6x6"
1202150200	6x8"
1202150250	6x10"
1202200300	8x12"

*No Wedge - use with non-wedged Hubs.

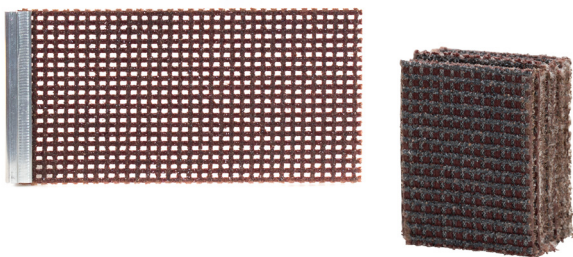


Side Grinding Panels XT Rough

XT panels have larger grit for more aggression and faster results. Sold in packages of 12 panels.

Product #	Panel Size
1204050100*	2x4"
1205050100	2x4"
1203075125	3x5"
1203100100	4x4"
1203100150	4x6"
1203150150	6x6"
1203150200	6x8"
1203150250	6x10"
1203200300	8x12"

*No Wedge - use with non-wedged Hubs.



Polishing Panels

For removing slight liner inconsistencies & polishing. Gentle cleaning in PVC pipe in fragile situations. Sold in packages of 12 panels.

Product #	Panel Size
1241035045*	1.4x1.8"
1241040050*	1.6x2.0"
1241050100	2x4"
1241075100	3x4"
1241100125	4x5"
1241100150	4x6"
1241150200	6x8"

*No Wedge - use with non-wedged Hubs.



Smart Steering Guide

A precision fine-tuning tool that attaches to the Smart Cutter™ Hub allowing the user to steer the Hub without damaging the lined pipe during the reinstatement process.

Product #	Model/Part
1312024125	4-6"
1312025125	6-8"

Steering Guide Spare Parts



Hub Discs used with the Steering Axle for 4 Panel Hubs. Use the Steering Wire with Weight for fine-tuning or with Twister Concrete Remover where there is access at both ends. Use with Steering Axle.



Product #	Part
1000210035	Steering Hub Disc S
1000210040	Steering Hub Disc L
1100100055	Steering Axle
1100200001	Bearing
1350150405	Steering Wire 328 ft

Wire Hook



The Wire Hook is attached at the end of the Shaft which will be then used for pulling and guiding.

Product #	Wire Hook
1350000125	For 1/2" Shaft
1350000085	For 1/3" Shaft

Counter Weight



Fine-tuning tool used to pull Hub downward to remove bottom lip of the liner.

Product #	Weight Model
1100500040	Small
1100500060	Large



Front Drill Head

Replacement Front Drill Head Kits for Twister Mini Flexi & Twister Express for lined and unlined pipes. Includes Front Drill Head and front brush. Models available for unlined and lined pipes.

Product #	Drill Size	Model	Pipe Size
1230000053	1.57"	Both	2"
1230000073	2.28"	Both	3"
900000987	2.28"	Unlined	3"
900000988	1.89"	Lined	3"
1300214075	3"	Unlined	4"
1300214085	3.3"	Unlined	4"



Front Metal Panel

1mm Front Metal Panel. Flexibility combined with carbides at the rear of the panel provide an advantage in reinstatement situations where the panel gets stuck. Grit 10.

Product #	Panel Size
1210310055	2.2"
1210310075	3"
1210310085	3.3"
1210310115	4.5"
1210310125	5"
1210310175	7"



Front Metal Panel Liner Remover

3mm Front Metal Panel for Twister Liner Remover with additional carbides on the back. Grit 10.

Product #	Panel Size
1210410075	3"
1210410085	3.3"
1210410115	4.5"
1210410125	5"
1210410175	7"



Front Metal Panel Twister Concrete Remover

3mm Front Metal Panel for Twister Concrete Remover with larger carbides. Grit 6.

Product #	Panel Size
1210510075	3"
1210510085	3.3"
1210510095	3.75"
1210510115	4.5"
1210510125	5"
1210510130*	5.1"
1210510175*	7"
1210510200*	8"

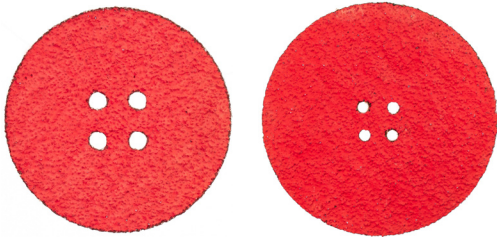
*For Twister Concrete Remover+



Tiger Front Metal Panel

Panel thickness: 6mm. Precision manufactured milling plate equipped with the specially hardened Tiger carbides. High quality sand-blasted aluminium.

Product #	Panel Size	Pipe Size
1260000058	2.3"	3"
1260000075	3"	4"
1260000085	3.3"	4"
1260000090	3.5"	5"
1260000100	4"	5"
1260000115	4.5"	6"
1260000125	4.9"	6"
1260000175	6.9"	8"
1260000065	2.6"	
1260000080	3.1"	
1260000140	5.5"	



Front Plastic Panel Package

Gentle option for special situations in fragile pipes. Gentle option for PVC or special situations in fragile pipes. Sold in packages of 10 panels.

Product #	Panel Size
1229990055	2.2"
1229990075	3"
1229990085	3.3"
1229990125	5"

Front Drill Head 1.38" 3 Ridged Hardened

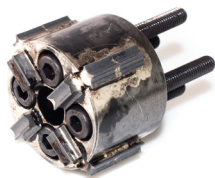
1300212035



Use with Twister with Front Metal Panels. Also use with Smart Cutter™ with Front Metal or Front Plastic Panels.

Front Drill Head Twister Concrete Remover

1300215040



Use with Twister Concrete Remover with Front Metal Panels.

Tiger Front Drill Head 1.5"

1260010038



Use with any Twister or Smart Cutter™

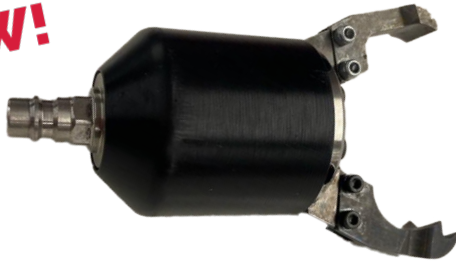
Front Drill Head 4 Flat Twister Liner Remover 1.57"

1300214040



Use with Twister Liner Remover with Front Metal Panels.

NEW!



Grabber Head for Picote Push Rods

2370000030

Original Grabber Head for use with Picote Push Rods.



Picote Grabber

Retrieve lost items or foreign objects.

Range: 32ft. Max Range: 96ft. Used with air compressor.

Comes with Grabber Jaw Set 1 and 2. Jaws open to max. 3.2".

Fits in 4" pipes or larger. Max lifting weight 80lbs.

Product #	Part
2370000001US	Picote Grabber
2370000002	Picote Grabber Extension 32.8 ft
2370000009	Spare Grabber Head with Jaws

Grabber Jaw Set 1

2370000003



Choose Jaw Set 1 to pick up chains and debris with good grabbing points.

Grabber Jaw Set 2

2370000004



Use Jaw Set 2 to pick up more rounded and smooth items which are harder to grip.

Grabber Jaw Set 3

2370000006



The longer jaws makes the Picote Grabber easier to use in larger pipes (6"+).



Picote Large Grabber

Retrieve lost or foreign objects.

Range: 10m. Max Range: 30m. Used with air compressor. Comes with one set of jaws.

Jaws open to max. 130mm. Fits in DN150 or larger pipes. Max lifting weight 68kg.

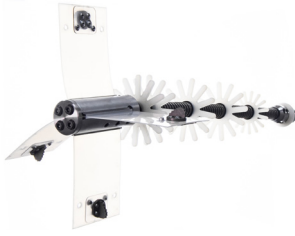
Product #	Part
2370000010US	Picote Large Grabber
2370000011	Large Grabber Jaw Set 1
2370000012	Large Grabber Extension 32.8 ft
2370000013	Spare Large Grabber Head with Jaws



Spare Grabber Steering Unit

2370000014US

Spare Steering Unit for the Picote Grabber and the Picote Large Grabber.



Pipe Cutter 4" Ultra Flex

1250000101

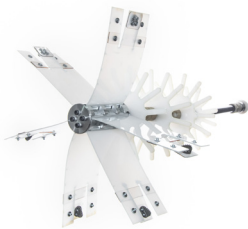
For 1/2" Shaft. Used to cut over-shot liners when there a bend before the cutting location. For spare panels use 4" panel (1250000100).



Pipe Cutter 6" Ultra Flex

1250000151

For 1/2" Shaft. Used to cut over-shot liners when there a bend before the cutting location. For spare panels, use 6" panels (1250000150).



Pipe Cutter 8" Ultra Flex

1250000200

For 1/2" Shaft. Used to cut over-shot liners when there a bend before the cutting location. For spare panels, use 8" panels (1250000201).



Pipe Cutter Centralizers Package

Includes 2 Centralizers & Spacer Collet.

Product #	Pipe Size
1250100100	4"
1250150150	6"

Pipe Cutter 3" Panel Package

1250000070



Cut over-shot liners in a straight section of pipe
Includes 4 panels.

1/3" Shaft: Hub 2" Narrow 2W (1000820050) & Hub Disc 2W (1000200020)

1/2" Shaft: Hub 3" Short (1001235050A) & Hub Disc S (1000200035).

Pipe Cutter 4" Panel Package

1250000100



Cut over-shot liners in a straight section of pipe
Includes 4 panels.

Used with Hub 3" 1/2" shaft (1001235075A) & Hub Disc S (1000200035).

Pipe Cutter 6" Panel Package

1250000150

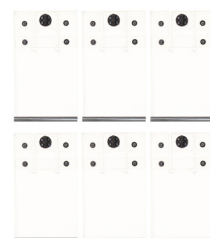


Cut over-shot liners in a straight section of pipe
Includes 4 panels.

Used with Hub 4" - 1/2" shaft (1001240100A) & Hub Disc L (1000200040). Includes Pipe Cutter Centralizers and Space Collet.

Pipe Cutter DN200 Ultra Flex Spare Panels

1250000201



Spare panels for Pipe Cutter Ultra Flex 8".
Includes 6 panels, Pipe Cutter Centralizers and Space Collet.



Flexible Shaft

Product #	Shaft Size	Length	Casing
1312020065025	¼"	25 ft	Regular
1312020065050	¼"	50 ft	Regular
1312030085025	⅓"	25 ft	Regular
1312030085010	⅓"	32 ft	Regular
1312030085050	⅓"	50 ft	Regular
1312030085075	⅓"	75 ft	Regular
1312030085100	⅓"	100 ft	Regular
1312020105005	⅜"	16 ft	Regular
1312020105010	⅜"	32 ft	Regular
1312020105015	⅜"	49 ft	Regular
1312020105020	⅜"	65 ft	Regular
1312020125010	½"	32 ft	Regular
1312020125025	½"	25 ft	Regular
1312020125050	½"	50 ft	Regular
1312020125075	½"	75 ft	Regular
1312020125100	½"	100 ft	Regular
1312021125010	½"	32 ft	Thick
1312021125050	½"	50 ft	Thick
1312021125075	½"	75 ft	Thick
1312021125100	½"	100 ft	Thick
1312021180011	¾"	36 ft	Thick

Picote Flexible Shaft Lubricant



Prolong the lifespan of your Miller with Picote's Flexible Shaft Lubricant. Instructions on maintaining the shaft, including how to lubricate are included in your Miller operating manuals.

Product #	Size
1350000020	16.9 oz Bottle
1350000021	6 Bottle Package



Miller Replacement Shafts

Product #	Miller Shaft	Length
1312030085014	Micro Miller	43.6 ft
1312030085017	Mini Miller	54.7 ft
131203108517	Mini Cleaner	54.1 ft
1312020125013	Midi Miller	44 ft
1312020105025	Midi Cleaner	82 ft
1312020125022	Super Midi	70 ft
1312021125033	Maxi Miller	108 ft
1312021180020	Maxi Miller Power+	67 ft



Shaft Casings

Product #	Shaft Casing
9331008000	Thick Outer Casing for ⅓" Shaft
9311713099	Mini Cleaner Shaft Flexible Casing 54.1 ft
9330010100	Thick Outer Casing for ⅜" Shaft
9330012000	Regular Outer Casing for ½" Shaft
9331012000	Thick Outer Casing for ½" Shaft
3212323196	Thick Outer Casing for ¾" Shaft

LEADERS, CONNECTORS & ADDITIONAL TOOLS



Leaders

Product #	Shaft Size	Length
1400800500	1/3"	19.7"
1401000500	3/8"	19.7"
1401200500	1/2"	19.7"
1401800500	3/4"	19.7"



Shaft Socket for Drill

Product #	Shaft Size
1310000065	1/4"
1310000085	1/3"
1310000105	3/8"
1310000125	1/2"



Shaft Connector

Product #	Shaft Size
9123050001	1/3" / 1/3"
900000336	1/3" / 3/8"
1313002105	3/8" / 3/8"
1313002125	1/2" / 1/2"
1313001285	1/2" / 1/3"
900000234	1/2" / 3/8"
1313002185	3/4" / 3/4"



Sleeves

Product #	Shaft Size	Casing
93212321085	1/3"	Thick
93212322105	3/8"	Regular
93212321125	1/2"	Regular
93212322125	1/2"	Thick

Shaft Rounder

1350000018



Rounds sharp edges of the shaft.

Sheath Cutter 1

1350000006



Used when there is no shaft in the outer casing.

Sheath Cutter 2 (Shaft inside outer casing)

1350000011



Used when there is shaft inside the outer casing.

Cutter for Side Grinding Panels

1350000012



Used when there is no shaft in the outer casing.

Hex Keys



Product #	Model
1350000008	Hex Key 4mm
1350000009	Hex Key 3mm
1350000010	Hex Key 2.5mm
1350000013	Combo Hex Key 1-6mm

Mini Cleaner/Mini Miller Handle Upgrade Kit

9530000045



Add the foldable handle to your older style Mini Miller or Mini Cleaner with the Handle Upgrade Kit to make transporting your Miller easier.

Strain Relief Mini Miller 1/3" Thick Casing

9530000134



For older style Mini Miller without Safety Clutch.



Strain Relief Spring Mini Miller for Safety Clutch

9530000134-1

For Mini Miller & Mini Cleaner with Safety Clutch.

Strain Relief for Larger Millers



Product #	Miller	Shaft
9550000070	Midi Cleaner	3/8"
9550000034	Super Midi	1/2"
9560000034	Maxi Miller	1/2"

Safety Clutch Upgrade Kit for Mini Miller

9530000041



Upgrade older style Mini Millers to include the latest Safety Clutch.



Mini Cleaner +C Upgrade Kit

3540002000US

Upgrade Mini Cleaner with a camera that makes viewing of cleaning and cutting easier. Camera cable: 98' Screen size: 7" Color Monitor. Camera Head: 9/16" Lighting: 8 LEDs with brightness control Digital footage counter, stainless steel camera head (IP68).



Mini Miller +C Upgrade Kit

3540001000US

Upgrade Mini Miller with a camera that makes viewing of cleaning and cutting easier. Camera cable: 98' Screen size: 7" Color Monitor. Camera Head: 7/8" (self levelling) Lighting: 12 LEDs with brightness control Digital footage counter, stainless steel camera head (IP68). Also includes non self-levelling camera head.

Maxi Miller 110v to 240v Upgrade Package **NEW!**

Picote Maxi Miller 110V US models can be upgraded to 240V versions. Picote Maxi Millers have two kinds of motors. Old type and new type Maxi Miller motors have different parameters in the control box and therefore also the upgrade kit needs to be ordered according to Maxi Miller motor type.

Serial numbers between 0 – 2161 have old type motor. Old type motor can be identified by blank cover of switch box and no serial number plate on top of motor. Use Upgrade Package v1.

Serial number starting from 2161 have new type motor. New type of motor can be identified by ELK-text on cover of switch box and serial number plate on top of motor. Use Upgrade Package v2.

Product #	Miller
9560001095	Upgrade Package v1
9560001096	Upgrade Package v2

Mini Miller Safety Clutch

900000856



Spare safety clutch for Mini Miller.

Mini Cleaner Safety Clutch

900001204



Spare safety clutch for Mini Cleaner.



Spare Axle Package for Safety Clutches

9530000047

Spare axle for Mini Miller and Mini Cleaner Safety Clutches. Includes 6pcs.

Silicone Spring for Mini Miller (White)

900000920



Replacement Silicone Spring (white) for Mini Miller (5 pieces).

Silicone Spring for Mini Cleaner (Red)

900001205



Replacement Silicone Spring (red) for Mini Cleaner (5 pieces).



Mini Reel Brake Upgrade Package

9540000075

For all Mini Miller and Mini Cleaner models. With Mini Reel Brake, easily lock your Miller's reel securely in position providing additional convenience and security during transportation.



Standard Battery for Super Mini Cleaner & Super Mini Miller

9540004011

Battery for Super Mini Cleaner & Super Mini Miller. Standard Battery provides up to 3 hours of continuous work. Weight: 8 lbs



High Output Battery for Super Mini Cleaner & Super Mini Miller

9540004035

Battery for Super Mini Cleaner & Super Mini Miller. High Output Battery provides up to 4 hours of continuous work. Weight: 9 lbs

Spare Battery Charger

9540004013US



Suitable for charging Standard and High Output Batteries.



Specialized Shaft Connector 3/4" to 1/2"

1313001812

Use inside 6-Panel Hub (to right) to connect the Hub to Maxi Power+.



Shaft Connector 3/4" to 3/4"

1313002185

Maxi Power+ Spare Part
For connecting 3/4" to 3/4" Shaft.



Strain Relief Spring Maxi Power+

9570000034-2



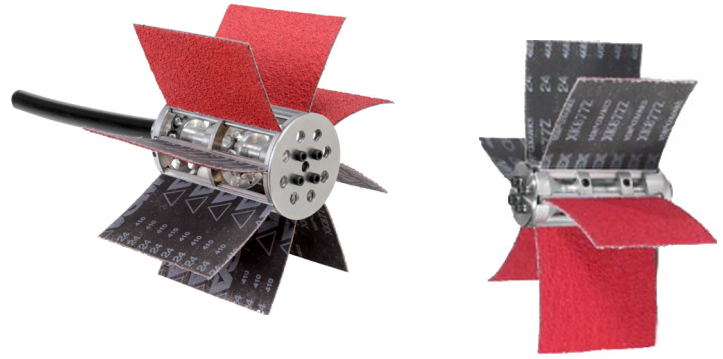
Maxi Power+ Shafts - 3/4"

Product #	Miller
1312021180020	Replacement Shaft 3/4" - 67 ft
1312021180011	Shaft Extension 36ft



Sleeve for 3/4" Shaft Outer Casing

93212520180SB



Smart Cutter™ Hub

A cleaning & fine-tuning tool. For reinstatements make the first initial cut with a Twister+ and follow up by grinding remaining edges with the Smart Cutter+. Also, removes inconsistencies, wrinkles and remains of failed liner. Use in cast iron, concrete, clay and PVC pipes.

Product #	Pipe Size	Shaft	Panels & Size (S)x(D)x(L)
1001250100A*	4-6"	1/2"	6 Panels 12x50x100
1001870150A	6-8"	3/4"	8 Panels 18.5x70x150
1021800200	8-12"	3/4"	8 Panels 18.5x100x150

Side Grinding Panels

Sold in packages of 12. See the Smart Cutter™ Hub Selection Guide on the Picote Institute.

Product #	Panel Size
1202100100	4x4"
1202150150	6x6"
1202150200	6x8"
1202150250	6x10"

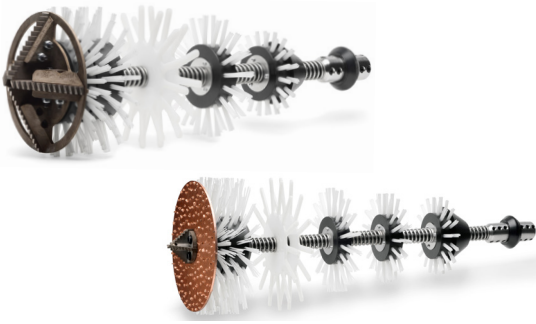


Hub Discs

Hub Discs for Smart Cutter™ use on the Maxi Power+. See the Smart Cutter™ Hub Selection Guide on the Picote Institute.

Product #	Disc	Size
1000200050	XL	2"
1000200070	XXL	2.75"
1000200100	XXXL	4"

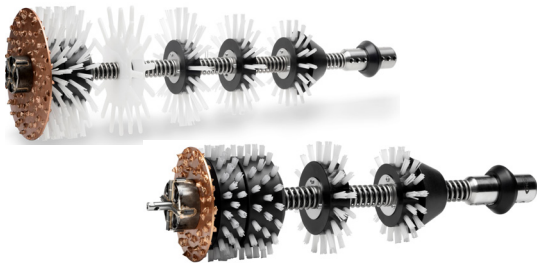




Twister+

For quick reinstatements in large pipes. Make the first initial cut with a Twister+ and follow up by grinding remaining edges with the right size Smart Cutter™+.

Product #	Pipe Size	Shaft
1230130150	6"	3/4"
1230175200	8"	3/4"
1230200225	9"	3/4"
1230225250	10"	3/4"
1230275300	12"	3/4"



Twister Concrete Remover+

For efficient concrete, grout & slurry removal. Use Steering Axle models where pipe is less than 50% full of material and you have access points from both ends. Feed a pulling cable through the pipe and attach it to steering axle on the Twister.

Product #	Pipe Size
1234130150	6"
1234175200	8"
1234200225	9"
1234130150SA*	6"
1234175200SA*	8"
1234200225SA*	9"

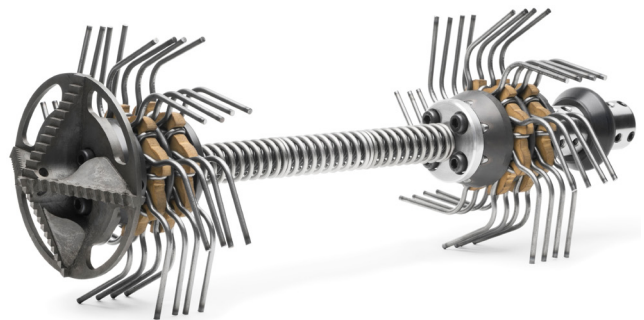
*Steering Axle Model

Front Drill Head Concrete Remover+

1300215057



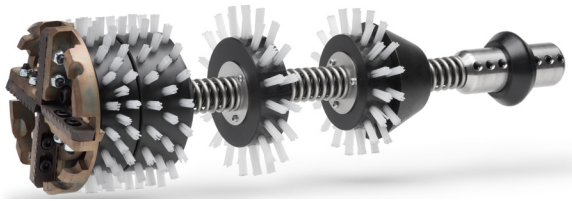
Used with Concrete Remover+ with Front Metal Panels. Diameter of the drill head is 2.36".



Smart Spider+

For descaling damaged pipes with missing bottoms or holes where typical chains or other descaling methods may be too aggressive, get stuck in the missing sections or holes, or can come out from the pipe. Also good for Fats, Oils & Grease (FOGs).

Product #	Model/Part
1390180150	Smart Spider+ 6"
1390180200	Smart Spider+ 8"
1390180225	Smart Spider+ 9"
1000200059	Smart Hub Disc 6-9"
1000210059	Smart Hub Disc with Hole 6-9"
1390180001	Smart Spider+ Legs 6"
1390180002	Smart Spider+ Legs 8"
1390180003	Smart Spider+ Legs 9"
1390180004	Smart Sweeper/Spider+ 6-9" Axle
1390180005	Smart Spider Rubber Flex



Smart Crusher

For situations where the collapse is in the center or fully collapsed. Makes the initial removal, follow up with Cyclone Premium or Smart Cutter™. Front Drill Head can be used for liner that has sagged from the top. For 3/4" Shaft.

Product #	Model/Part
1370180070	Smart Crusher 3"
1370180100	Smart Crusher 4"
1370180150	Smart Crusher 6"
1370180200	Smart Crusher 8"
1370180225	Smart Crusher 9"
1300218100	Front Drill Head 4"
1300218150	Front Drill Head 6"
1300218200	Front Drill Head 8"
1300218225	Front Drill Head 9"
900000713	Smart Crusher Blade 4"
900000663	Smart Crusher Blade 6"
900000709	Smart Crusher Blade 8"
900000710	Smart Crusher Blade 9"
9990700026	Screws 4": DINg12 M5x18
1350000140	Screws 6, 8 & 9": DINg12 M6x20
1300215060	Front Drill Head 3"
1300215085	Front Drill Head 4"
1300215130	Front Drill Head 6"
1300215175	Front Drill Head 8"
1300215200	Front Drill Head 9"
900000723	Screws 8-9": DINg12 M6x30
900000694	Front Drill Head Blade 8"
900000716	Front Drill Head Blade 9"



Smart Sweeper+

A self-centralizing and sideways grinding tool for challenging liner removal situations where the collapsed material is around the wall of the pipe. Use with the Front Drill Head to remove collapsed liner, or for situations where too big of a liner has been installed in the pipe. For 3/4" shaft. See Smart Crusher Spare Parts List for replacement Front Drill Heads and Blades.

Product #	Model/Part
1360180150	Smart Sweeper+ 6"
1360180200	Smart Sweeper+ 8"
1360180225	Smart Sweeper+ 9"
1360180001	Spare Legs 6-9"
1390180004	Spare Axle 6-9"



Front Metal Panel

Panel thickness: 3mm. Grit 6.
For Twister Concrete Remover+.

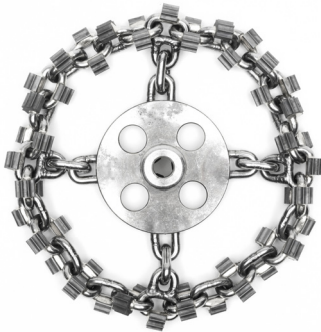
Product #	Panel Size	Pipe Size
1210510130	5.1"	6"
1210510175	6.9"	8"
1210510200	8"	9"



Original Premium Chain

Larger and heavier U carbide (7-ridge) makes it stronger and faster than any other chain on the market. A versatile tool for cast iron pipes. For tough descaling, hard deposits and removing residual concrete or failed liner, including inconsistencies, wrinkles and remains.

Product #	Pipe Size	Shaft Size
1380185100U	4"	3/4"
1380185150U	5-6"	3/4"
1380185200U	8"	3/4"
1380185250U	9-10"	3/4"
1380185300U	12"	3/4"



Cyclone Premium Chain

Larger and heavier U carbide (7-ridge) makes it stronger and faster than any other chain in the market. No need to adjust, the centrifugal force centers the tool inside the pipe. For tough descaling, hard deposits and removing residual concrete or failed liner.

Product #	Pipe Size	Shaft Size
1381185100U	4"	3/4"
1381185125U	5"	3/4"
1381185150U	6"	3/4"
1381185200U	8"	3/4"
1381185225U	9"	3/4"
1381185250U	10"	3/4"
1381185300U	12"	3/4"



Tornado Original Chain

With strong hardened stainless steel links instead of carbides these chains are long-lasting and ideal for descaling and removing hard deposits inside cast iron pipes.

Product #	Pipe Size	Shaft Size
1380185100T	4"	3/4"
1380185150T	5-6"	3/4"
1380185200T	8"	3/4"
1380185250T	9-10"	3/4"
1380185300T	12"	3/4"



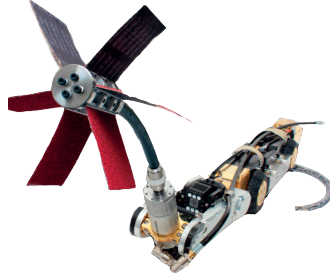
Tornado Cyclone Chain

With strong hardened stainless steel links instead of carbides these chains are long-lasting and ideal for descaling and removing hard deposits inside cast iron pipes.

Product #	Pipe Size	Shaft Size
1381185150T	6"	3/4"
1381185200T	8"	3/4"
1381185225T	9"	3/4"
1381185250T	10"	3/4"
1381185300T	12"	3/4"

Picote Robot Tools for Schwalm Robots

Larger pipes require bigger tools and a longer reach. When this is the case, Picote has a robotic tool range that is designed to be fitted to the world renowned Schwalm Talpa Robot. Together with Schwalm's engineering team, Picote has created tools that can perform challenging tasks such as grinding, cutting and cleaning. It is also possible to grab lost items or remove obstructions with the Grabber pincher jaws mounted on board with an HD camera for precision work.



Robo Shaft Connector



Combine Picote tools with the Schwalm Robotic System to create a powerful and versatile solution. Go further in distance: 1,200 ft Provide speciality services to the oil industry and for water & sewer mains.

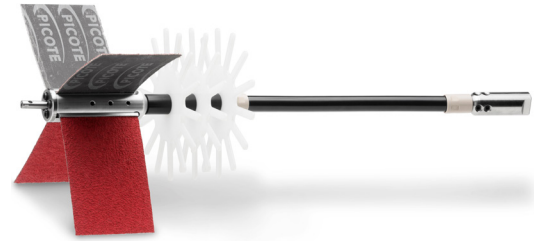
Product #	Size	Shaft
1313004125	M14	1/2"
1313004185	M14	3/4"



Robo Cyclone

Descale pipe for long distances. Mount the Robo Cyclone on a robot for efficient cleaning and grinding.

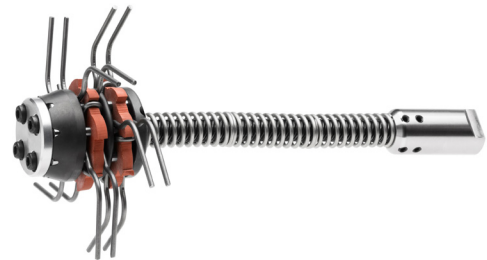
Product #	Pipe Size
1420125150	6"
1420125200	8"
1420125250	10"
1420125300	12"



Robo Smart Cutter™

Use the robot cutting ball and then follow up with the Smart Cutter™. Grind away seams, welding beads and other inconsistencies in the pipe. Steering option included.

Product #	Pipe Size
1421125150	6"
1421125200	8"
1421125250	10"
1421125300	12"



Robo Smart Spider

Descale fragile pipes with ease with your multi-use robot. Gentle on brass connections in water mains.

Product #	Pipe Size
1422125150	6"
1422125200	8"

Robo Grabber

1423125010



Add a grabbing capability to your robot to remove items from hard to reach places. Reclaim a tool or item, weighing up to 77lb. Grab lost items or remove obstructions with the Grabber pincher claws mounted on board with a HD camera for precision work.



Specialized Hands-On Picote Training

Picote has a range of face-to-face training options to help you get the most out of your equipment:

- **General Training Courses** which can be tailored to suit your needs. Get the most out of your Picote Miller and learn the full range of tools and possibilities.
- **Certified Maxi Miller Power+ Training**
- **Certified Installer**
- **Picote Brush Coating™ Training**
- **Connection Collar System Training**
- **CIPP Training**

Tech Support

Our Team of Technical Experts are available wherever you are in the world! We offer a range of online courses to suit your requirements. With a

balanced program of presentations, live demos and an in depth Q&A, you can learn about the full range of tools and get the most out of your Picote equipment in the convenience of your own location. We also offer training at customer locations and on site support at your job site.



Successful Planning & Implementation with Picote

Rehabilitation projects can be daunting, especially considering all of the small details that need to be taken care of, solutions can often seem out of reach. Picote can respond to this challenge, working with you to produce the necessary planning, as well as finding the best solutions for the job in hand and helping the end client understand what all of this requires, whether they are a utility company, housing association or municipality.

Our award-winning tools and solutions benefit contractors around the world. The Picote Global Technical Team has decades of experience in the trenchless field from planning to completion of projects.



E-Learning & Online Resources

Register for FREE! Picoteinstitute.com, a cloud-based learning & support platform provides interactive e-learning courses, and access to resources including Manuals, Quick Guides, Q&A with Picote Experts, Videos, and Technical Support Materials.

**For More
Information,
Please
Contact:**



**Apex CIPP is your Picote dealer
and certified service center!**

941-300-0441

info@apexcipp.com

www.apexcipp.com



picotegroup.com
picoteinstitute.com

support@picotesolutions.com
training@picotesolutions.com